

Viking Odin

Shoulder warmer, hat and mittens

1307-1

Size: S – M – L

Width, shoulders: 90 – 105 – 120 cm

35.4-41.4-47.2 in

Circumference, hat: 51 – 53 – 56 cm

20.1-20.9-22 in

ALTERNATIVE YARN: Viking Odin (100% wool, superwash), 100 g ball. Viking Eco Alpaca (100 % alpaca), 100 g skein. Viking Kid Mohair (70% kid mohair-18% merino wool-12% nylon), 50 g ball

Shoulder warmer:

White, 800 : 3 - 3 - 4 balls

Hat and mittens:

White, 800: 2 - 2 - 2 balls

Circular needle and double pointed needles size 5 and 5 ½ mm – US 8 and 9 – UK/Canadian 6 and 5

Gauge: 18 sts = approx. 10 cm/4 in over St st using needles size 5½ mm. Check your gauge to ensure success.

SHOULDER WARMER

Using needles size 5 ½ mm, cast on 200 – 232 – 260 sts. Work in rnds approx. 7 cm/2.8 in in K2,P2 rib.

Work 1 rnd in St st, and adjust number of sts to be 203 – 232 – 261 sts. Beg rnd mid back, and cont working in patt A until work measures approx. 24 – 24 – 24 cm/9.4-9.4-9.4 in (end as charted).

Change to needles size 5 mm. Knit 1 rnd over all sts, and dec evenly across number of sts to be 152 – 176 – 196 sts. Work in rnds approx. 3 cm/1.2 in in K2,P2 rib. Bind off in rib.

HAT

Using needles size 5 mm, cast on 92 – 96 – 100 sts. Work in rnds approx. 8 cm/3.1 in in K2,P2 rib. Change to needles size 5½ mm. Work 1 rnd in St st, and inc evenly across number of sts to be 145 sts (same for all sizes). Work in patt A until work measures approx. 20 – 22 – 24 cm/7.9-8.7-9.4 in. Beg crown dec: *Work 5 sts in patt A, K2tog, K6, sl 1 st, K1, psso, work 3 sts in patt A, K2tog, work 6 sts in patt A, sl 1 st, K1, psso, work 1 st in patt A*, rep *-* across the rnd. Work 1 rnd in patt A (over rem sts). Next rnd: *Patt A over 4 sts, K2tog, K1, K2tog, sl 1 st, K1, psso, K1, sl 1 st, K1, psso, K1, K2tog, K1,K2tog, sl 1 st, K1, psso, K1, sl 1 st, K1, psso. Work 1 rnd in St st over all sts. Cont working in St st, and knit all sts tog in pairs. Knit 1 rnd. Rep dec until 14 sts rem. Break yarn, thread through rem sts, pull the yarn tightly, and weave in on WS.

MITTENS

Size: Woman

Using needles size 5 ½ mm, cast on 36 sts. Work in rnds approx. 7 cm/2.8 in in K2,P2 rib. Place markers each side, 18 sts for both sides. Cont working in St st over 18 sts on palm side, and inc evenly the number of sts to be on the upper side to be 25 sts = patt B. When work measures approx. 10 cm/4 in, inc for thumb gusset:

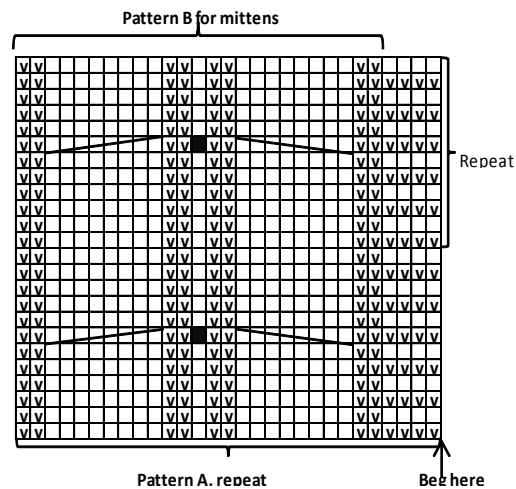
Beg from sidemarker (palm side), and K2, M1, K1, M1 = 3 sts. Cont working in rnds same as before, and inc for thumb gusset every 3rd rnd until there is 11 sts for the gusset. Slip gusset sts on holder. Cast on 1 new st over the gusset sts, and cont working in rnds in St st and patt B same as before until work measures approx. 10 cm/4 in, measured from thumb gusset edge (or desired

length). Dec 1 st **every** rnd on upper side both sides of patt B, and 1 st every 2nd rnd 3 times, and then every rnd on palm side with St st. Dec before the marker: Sl 1 st, K1, psso; after the marker: K2tog (Note! Cont working in cable patt as long as it possible). Last rnd: dec 2 sts mid patt B = sl 1 st, K2tog, psso. 5 sts rem on a rnd. Break yarn, thread through rem sts, pull the yarn tightly, and weave in on WS.

Thumb: Slip sts from holder over needles size 5½ mm. Knit or pick up 3 sts from upper edge of the thumb opening = 14 sts.

Work approx. 6 cm/2.4 in (or desired length) in St st. Next rnd: Knit all sts tog in pairs = 6 sts rem. Break yarn, thread through rem sts, pull the yarn tightly, and weave in on WS.

Work same for the other mitten, with thumb on the opposite side.



□ = Knit on RS, purl on WS

◻ = Purl on RS, knit on WS

■ = 1 bobble (Knit same st 3 times: K1tfl, K1tbl, K1tfl = 3 sts. Turn, P3, turn, k3, turn, P3. Sl first st, K2tog, psso = 1 st)

▬ = Sl 4 sts on cn and hold to front. K4, knit sts from cn

▮ = Sl 4 sts on cn and hold to back. K4, knit sts from cn

Viking Odin

Sweater

1307-2

Size: 2/4 – 6/8 – 10 – 12/14 yrs

Chest: 62 – 71 – 80 – 89 cm

24.4-28-31.5-35 in

Length: 38 – 48 – 54 – 60 cm

15-18.9-21.3-23.6 in

Sleeve length: 30 – 36 – 42 – 46 cm

11.8-14.2-16.5-18.1 in

ALTERNATIVE YARN: Viking Odin (100% wool, superwash), 100 g ball, Viking Eco Alpaca (100 % alpaca), 100 g skein, Viking Kid Mohair (70% kid mohair-18% merino wool-12% nylon), 50 g ball

White, 800: 4 – 4 – 5 – 6 balls

Circular needle and double pointed needles size 5 and 5 ½ mm – US 8 and 9 – UK/Canadian 6 and 5

Gauge: 18 sts = approx. 10 cm/4 in over St st using needles size 5½ mm. **Check your gauge to ensure success.**

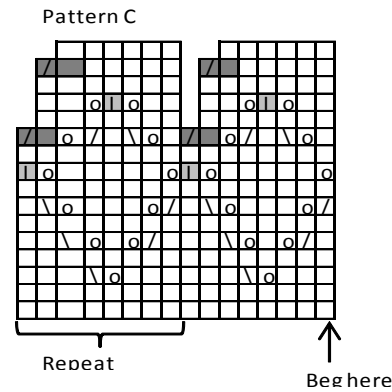
Using needles size 5 mm, cast on 112 – 128 – 144 – 160 sts. Work 2 rnds in Garter st. Change to needles size 5½ mm. Work patt B, and after that cont working in St st. Place markers each side, 56 – 64 – 72 – 80 sts for both front and back. When work measures approx. 24 – 32 – 36 – 40 cm/9.4-12.6-14.2-15.7 in,

bind off 6 sts each side (3 sts both sides of the markers). Leave work aside.

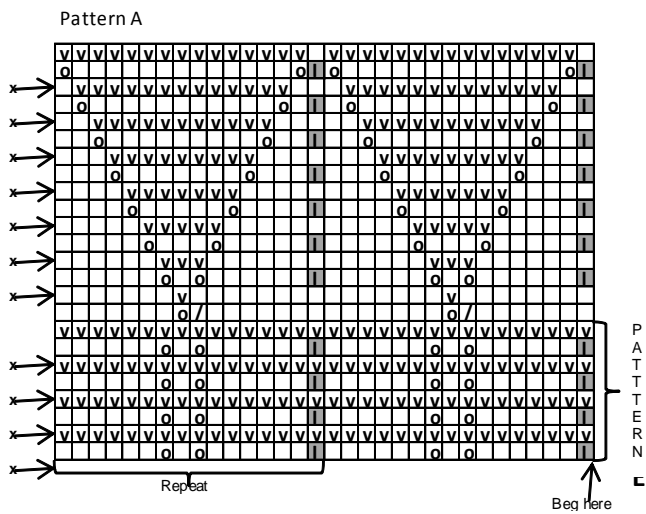
Sleeves: Using needles size 5 mm, cast on 32 – 32 – 32 – 48 sts. Work 2 rnds in Garter st. Change to needles size 5½ mm. Work in patt A. Place a marker round 1st st of the rnd (= mid under arm). Work patt B, and after that cont working in St st. Inc 1 st both sides of the marker approx. every 2½ – 2 ½ – 2 ½ – 4 ½ cm/1-1-1-1.8 in until there is 48 – 52 – 56 – 64 sts on a rnd, and sleeve measures approx. 30 – 36 – 42 – 46 cm/11.8-14.2-16.5-18.1 in. Bind off 6 sts mid under arm on last rnd.

Take all sts on same circular needle size 5 ½ mm = 184 – 208 – 232 – 264 sts on a rnd.

Yoke: Beg from back right shoulder, work patt C, patt D, and after that in St st. Dec **same time** for yoke every 5th – 5th – 6th – 7th rnd with 1 st less between each dec until 69 – 78 – 87 – 99 sts rem, and work measures approx. 38 – 48 – 54 – 60 cm/15-18.9-21.3-23.6 in. Next rnd: Dec evenly across the rnd number of sts to be 64 – 64 – 80 – 80 sts. Work patt E. Bind off. Sew under arm seams.



- = Knit
- ∇ = Purl
- ◻ = 1yo
- ∩ = Sl 1st, K1, pss0
- ▧ = K2tog
- ▨ = Sl 1st, K2tog, pss0
- ▩ = K2tog (= 1st dec for yoke)



- = Knit
- ∇ = Purl
- ▧ = K2tog
- ◻ = 1yo
- ▨ = Sl 1st, K2tog, pss0
- x = Last st of the rnd is part of beg of the rnd

Viking Odin Tunic

1307-3

Size: 4/6 - 8/10 - 12 yrs

Chest: 65 - 70 - 76 cm

25.6-27.6-29.9 in

Length: 53 - 62 - 73 cm

20.9-24.4-28.7 in

ALTERNATIVE YARN: Viking Odin (100% wool, superwash), 100 g ball. Viking Eco Alpaca (100 % alpaca), 100 g skein. Viking Kid Mohair (70% kid mohair-18% merino wool-12% nylon), 50 g ball

Dark Violet, 878	3	-	3	-	4 balls
White, 800	1	-	1	-	1 ball
Light Violet, 877	1	-	1	-	1 ball

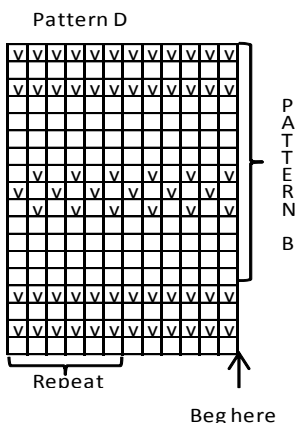
Double pointed needles and circular needle size 5 ½ mm – US 8 and 9 – UK/Canadian 6 and 5

Gauge: 18 sts = approx. 10 cm/4 in over St st using needles size 5 mm. **Check your gauge to ensure success.**

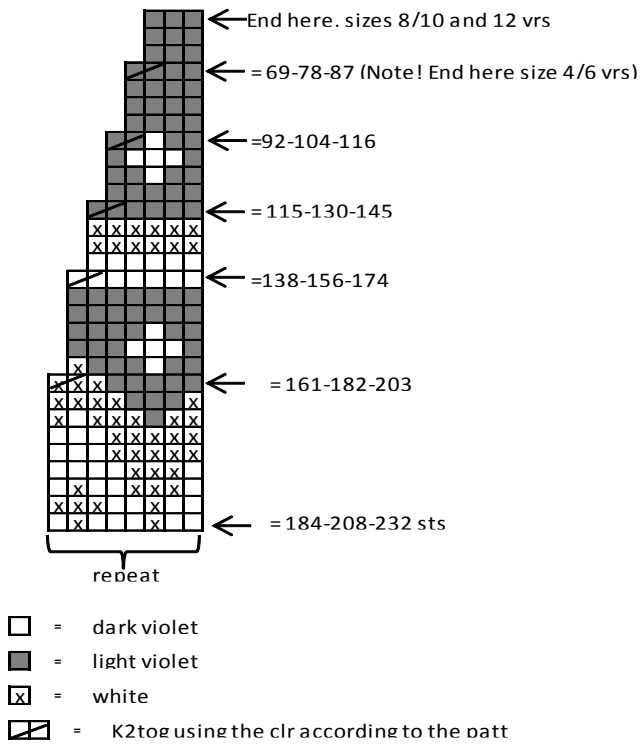
Using needles size 5½ mm and dark violet yarn, cast on 132-146-160 sts. Work in rnds 3 cm/1.2 in in K1,P1 rib. Place markers each side, 65-73-79 sts for back, and 67-73-81 sts for front. Cont working in St st, and dec 1 st both sides of the markers approx. every 7 ½ -8- 8 cm/3-3.1-3.1 in altog. 4-5-6 times =116-126-136 sts. When work measures approx. 34-43-52 cm/13.4-16.9-20.5 in, bind off for armholes 8 sts each side (4 sts both sides of the markers).

Yoke: Cast on 43-53-59 sts over the bound-off armhole sts = 186-216-238 sts on a rnd. Knit 1 rnd over all sts, and dec evenly across the rnd number of sts to be 184-208-232 sts. Cont working in rnds in patt and dec as charted. End as charted, and dec after that evenly across number of sts to be 60-66-72 sts. Change to light violet, and knit 1 rnd. Work 12-14-16 cm/4.7-5.5-6.3 in in K1,P1 rib. Bind off in rib.

Armhole edges: Using needles size 5 mm and dark violet yarn, pick or knit up 52-62-68 sts. Work in rnds 3 cm/1.2 in in K1,P1 rib. Bind off in rib. Work same for the other armhole edge. Weave in all ends on WS.



PATTERN II



41 – 42 – 42 cm/ 16.1-16.1-16.5-16.5 in, divide work at side markers. Finish each side separately.

Back: Cont working same as before. When work measures approx. 64 – 65 – 67 – 68 cm/25.2-25.6-26.4-26.8 in, slip 23 – 24 – 24 – 25 mid sts on holder for neck edge. Finish each side separately. Bind off at neck edge 6 – 7 – 7 – 7 sts. When work measures approx. 66 – 67 – 69 – 70 cm/26-26.4-27.2-27.6 in, knit 1 row over all sts, and dec 8 sts over each cable. Bind off. Work same for the other side, rev all shaping.

Front: Work same as for back, **but** when work measures approx. 59 – 60 – 61 – 62 cm/23.2-23.6-24-24.4 in, slip 13 – 14 – 14 – 15 mid sts on holder for neck edge. Finish each side separately. Bind off at neck edge every 2nd row 1x5 – 6 – 6 – 6 sts, 1x3 sts, 1x2 sts and 1x1 st. When work measures approx. 66 – 67 – 69 – 70 cm/26-26.4-27.2-27.6 in, knit 1 row over all sts, and dec 8 sts over each cable. Bind off.

Work same for the other side, rev all shaping.

Sleeves: Using needles size 5 mm, cast on 40 – 44 – 44 – 44 sts. Work in rnds approx. 6-6-6-6 cm/2.4-2.4-2.4-2.4 in in K2,P2 rib. Change to needles size 5 ½ mm. Work in St st, and inc evenly across 1st rnd number of sts to be 48 – 50 – 52 – 52 sts. Place a marker beg of the rnd = mid under arm. Inc 1 st both sides of the marker approx. every 2 cm/0.8 in until there is 90 – 94 – 98 – 100 sts on a rnd, and sleeve measures approx. 48 – 50 – 52 – 54 cm/18.9-19.7-20.5-21.3 in. Bind off.

Finishing: Join shoulder seams.

Neck band: Using needles size 5 mm, pick or knit up approx. 80 – 84 – 84 – 88 sts. Work in rnds approx. 8 cm/3.1 in in K2,P2 rib. Bind off rather loosely in rib. Fold neck band in double, and sew on WS.

Sew on sleeves.

Viking Odin

Sweater

1307-4

Size: S – M – L – XL

Chest: 110 – 115 – 120 – 125 cm
43.3-45.3-47.2-49.2 in

Length: 66 – 67 – 69 – 70 cm
26-26.4-27.2-27.6 in

Sleeve length: 48 – 50 – 52 – 54 cm
18.9-19.7-20.5-21.3 in

ALTERNATIVE YARN: Viking Odin (100% wool, superwash), 100 g ball. Viking Eco Alpaca (100 % alpaca), 100 g skein. Viking Kid Mohair (70% kid mohair-18% merino wool-12% nylon), 50 g ball

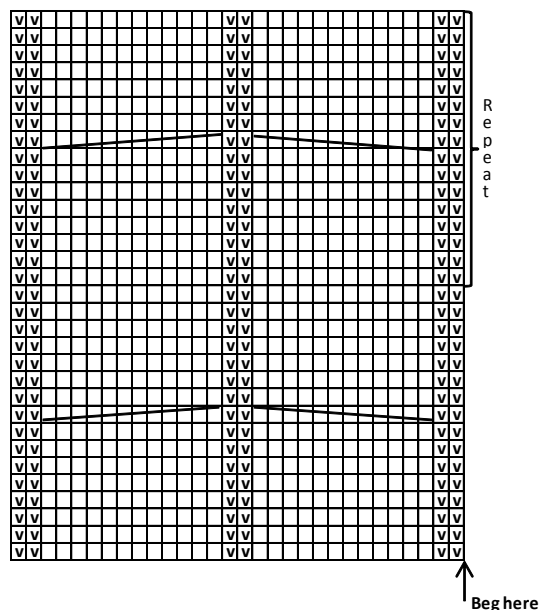
Grey multicl, 812 : 9 – 9 – 10 – 11 balls

Circular needle and double pointed needles size 5 and 5 ½ mm – US 8 and 9 – UK/Canadian 6 and 5

Gauge: 18 sts = approx. 10 cm/4 in over St st using needles size 5½ mm. **Check your gauge to ensure success.**

Using needles size 5 mm, cast on 184 – 196 – 204 – 212 sts. Work in rnds approx. 6 – 6 – 7 – 7 cm/2.4-2.4-2.8-2.8 in in K2,P2 rib. Change to needles size 5½ mm. Work 1 rnd in St st, and inc evenly across number of sts to be 198 – 208 – 216 – 226 sts. Place markers each side, 99 – 104 – 108 – 113 sts for both front and back. Inc for cables as foll: St st over 10 – 11 – 12 – 14 sts, inc 8 sts over next 22 sts = patt A (30 sts), St st over 35 – 38 – 40 – 41 sts, inc 8 sts over next 22 sts = patt A (30 sts), St st over 20 – 22 – 24 – 28 sts, inc 8 sts over next 22 sts = patt A (30 sts), St st over 35 – 38 – 40 – 41 sts, inc 8 sts over next 22 sts = patt A (30 sts), and end with St st over 10 – 11 – 12 – 14 sts. Cont working as established. When work measures approx. 41 –

Pattern A



□ = Knit on RS, purl on WS

▣ = Purl on RS, knit on WS

▬▬▬▬▬▬ = Sl 6 sts on cn and hold to front, K6, knit sts from cn

▬▬▬▬▬▬ = Sl 6 sts on cn and hold to back, K6, knit sts from cn

Viking Odin

Cropped sweater

1307-5

Size: S – M – L – XL

Bust: 100 – 109 – 122 – 131 cm

39.4-42.4-48-51.6 in

Length: 40 – 42 – 45 – 48 cm

15.7-16.5-17.7-18.9 in

Sleeve length: 12 – 12 – 14 – 15 cm

4.7-4.7-5.5-5.9 in

ALTERNATIVE YARN: Viking Odin (100% wool, superwash), 100 g ball. Viking Eco Alpaca (100 % alpaca), 100 g skein. Viking Kid Mohair (70% kid mohair-18% merino wool-12% nylon), 50 g ball

White, 800 : 6 – 6 – 7 – 8 balls

Circular needle and double pointed needles size 5 and 5 ½ - US 8 and 9 – UK/Canadian 6 and 5

Gauge: 18 sts = approx. 10 cm/4 in over St st using needles size 5½ mm. **Check your gauge to ensure success.**

BACK

Using needles size 5 mm, cast on 90 – 98 – 110 – 118 sts. Work back and forth 4 cm/1.6 in in K2,P2 rib. Change to needles size 5 ½ mm. Inc for cable patt as foll (on WS row): Work Seed st over 11 – 13 – 16 – 20 sts, inc 6 sts over next 16 sts = patt A (22 st), Seed st over 10 – 12 – 15 – 15 sts, inc 6 sts over next 16 sts = patt A (22 sts), Seed st over 10 – 12 – 15 – 15 sts, inc 6 sts over next 16 sts = patt A (22 sts), and end with Seed st over 11 – 13 – 15 – 20 sts. Cont working back and forth as established until work measures approx. 40 – 42 – 45 – 48 cm/15.7-16.5-17.7-18.9 in. Knit 1 row over all sts, and dec 6 sts over each cable.

Front: Work same as for back. When work measures approx. 35 – 37 – 40 – 42 cm/13.8-14.6-15.7-16.5 in, dec 6-6-6-6 sts over 22 – 22 – 24 – 24 mid sts, and leave these sts on holder. Finish each side separately. Bind off at neck edge every 2nd row 1x3 sts, 1x2 sts and 1x1 st. When work measures 40 – 42 – 45 – 48 cm/15.7-16.5-17.7-18.9 in, knit 1 row over all sts, and dec 6 sts over each cable.

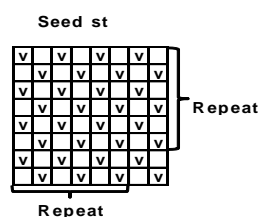
Work same for the other side, rev all shaping.

Sleeves: Using needles size 5 mm, cast on 96 – 96 – 104 – 112 sts. Work in K4,P4 rib until sleeve measures 12 – 12 – 14 – 15 cm /4.7-4.7-5.5-5.9 in. Bind off in rib.

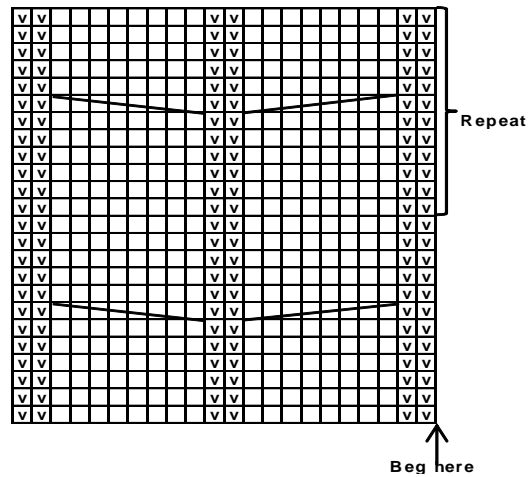
Collar: Beg from left shoulder. Using needles size 5 mm, knit or pick up approx. 72 – 80 – 80 – 88 sts. Work 1 rnd, and inc evenly across number of sts to be 78 – 84 – 84 – 90 sts. Work in K3,P3 rib. When work measures approx. 5 cm/2 in, inc 1 st to every 3rd st, and cont working in rnds in K4,P4 rib until collar measures approx. 28 cm/11 in. Bind off in rib.

Finishing: Sew side seams, and leave approx. 20 – 22 – 22 – 24 cm/7.9-8.7-8.7-9.4 in for armholes.

Sew on sleeves.



Pattern A



□ = Knit on RS, purl on WS

▣ = Purl on RS, knit on WS

■ = 1 bobble (knit same st 3 times: K1f1, K1b1, K1f1 = 3 sts)
Strikk 3 m vranqt tilbake, snu. Strikk 3 m rett, snu. Strikk 3 m vranqt.
Sl first st, K2tog, pss0 = 1 st

▤ = Sl 4 sts on cn and hold to back, K4, knit sts from cn

▥ = Sl 4 sts on cn and hold to front, K4, knit sts from cn

Viking Odin

Sweater

1307-6

Size: S – M/L

Bust: 100 - 120 cm

39.4-47.2 in

Length: 65 - 68 cm

25.6-26.8 in

Sleeve: 48 - 51 cm

18.9-20.1 in

ALTERNATIVE YARN: Viking Odin (100% wool, superwash), 100 g ball. Viking Eco Alpaca (100 % alpaca), 100 g skein. Viking Kid Mohair (70% kid mohair-18% merino wool-12% nylon), 50 g ball

Dark Violet, 878 :

8 - 9 ball

Circular needle and double pointed needles size 5 and 5 ½ - US 8 and 9 – UK/Canadian 6 and 5

Gauge: 18 sts = approx. 10 cm/4 in over St st using needles size 5½ mm. **Check your gauge to ensure success.**

Using needles size 5 mm, cast on 172 – 204 sts. Work in rnds approx. 5-6 cm/2-2.4 in in K2,P2 rib. Change to needles size 5½ mm. Work 1 rnd in St st, and inc evenly across number of sts to be 180 – 216 sts. Place markers each side, 91 – 109 sts for front, and 89 – 107 sts for back. Work in patt A, until work measures approx. 40 – 41 cm/15.7-16.1 in. Divide work at each side for armholes, and finish back first.

Back: When work measures approx. 59 – 61 cm/23.2-24 in (end with a complete patt) , work in Garter st until work measures approx. 65 – 68 cm/25.6-26.8 in. Bind off.

Front: Work same as for back, but after 2 Garter st rows sl 15-15 mid sts on holder. Finish each side separately. Bind off at neck edge every 2nd row 1x4 – 5 sts, 1x3 sts, 1x2 sts, and 1x1 st.

When front measures same as back, bind off.

Work same for the other side, rev all shaping.

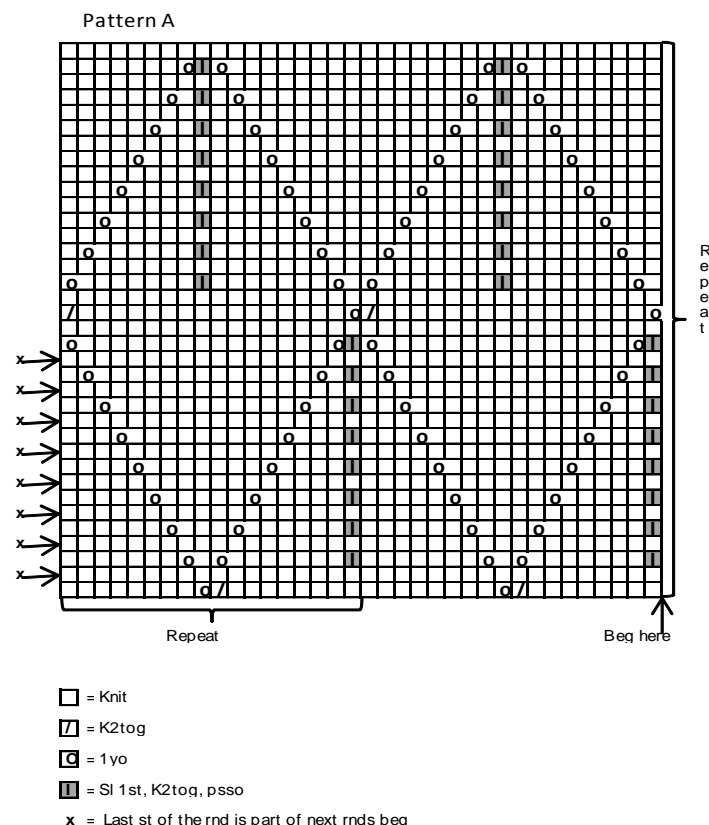
Sleeves: Using needles size 5 mm, cast on 36 – 40 sts. Work approx. 5-6 cm/2-2.4 in in K2,P2 rib. Change to needles size 5½ mm. Work in St st, and inc evenly across 1st rnd number of sts to be 44 – 48 sts. Place a marker beg of the rnd (= mid under arm). Inc 1 st both sides of the marker approx. every 1½ cm/0.6 in. When sleeve measures approx. 42-44 cm/ 16.5-17.3in, cont working in rnds in Garter st and rep inc until there is 90 – 98 sts on a rnd, and sleeve measures approx. 48 – 51 cm/18.9-20.1 in. Bind off.

Finishing: Join shoulder seams, 27 – 35 sts for each shoulder.

Neck band: Using needles size 5 mm, pick or knit up approx. 84 – 88 sts. Work in rnds approx. 6-7 cm/2.4-2.8 in in K2,P2 rib.

Bind off in rib.

Sew on sleeves.



Viking Odin

Sweater with hood

1307-7

Size:	2/4	6	8	10	12 yrs
Chest, approx.	62	69	73	80	85 cm
	24.4	27.2	28.7	31.5	33.5 in
Length, approx.	39	44	50	54	58 cm
	15.4	17.3	19.7	21.3	22.8 in
Sleeve length, approx.	26	32	36	40	43 cm
	10.2	12.6	14.2	15.7	16.9 in

ALTERNATIVE YARN: Viking Odin (100% wool, superwash), 100 g ball. Viking Eco Alpaca (100 % alpaca), 100 g skein. Viking Kid Mohair (70% kid mohair-18% merino wool-12% nylon), 50 g ball

GIRL (with 1 clr)

Multiclr, 833 4 5 5 6 6 balls

GIRL (with 2 clrs)

Clr 1: Cherry, 864 2 3 3 4 4 balls

Clr 2: Multiclr, 869 2 2 3 3 4 balls

BOY (with 2 clrs)

Clr 1: Blue, 825 2 3 3 4 4 balls

Clr 2: Multiclr, 823 2 2 3 3 4 balls

Circular needle and double pointed needles size 5 mm – US 8 – UK/Canadian 6
+ 3-3-3-4-4 buttons

Gauge: 18 sts = approx. 10 cm/4 in over St st using needles size 5½ mm. **Check your gauge to ensure success.**

Body

Using needles size 5½ mm and clr 1, cast on 112-124-132-144-156 sts. Place markers each side, 56-62-66-72-78 sts for back and front, and one marker after 84-93-99-108-117 sts (= mid back).

Work 12 rnds in Garter st. Change to clr 2, and cont working in St st. Work until mid back marker, K6, turn, P12. Turn every 2nd row with 6 more sts each time, altog. 5 times at each side.

Cont working in rnds with all sts. When work measures approx. 27-30-35-37-40 cm/10.6-11.8-13.8-14.6-15.7 in, measured mid front, bind off 6-6-8-8-8 sts each side = 3-3-4-4-4 sts both sides of the markers. Put work aside.

Sleeves

Using needles size 5½ mm and clr 1, cast on 26-28-30-32-34 sts. Work 12 rnds in Garter st. Knit 1 rnd, and inc evenly across 6 sts (same for all sizes). Change to clr 2. Place a marker mid under sleeve. Cont working in rnds St st. Inc 1 st both sides of the marker approx. every 4-3 ½ - 3 ½ -3-3 cm/1.6-1.4-1.4-1.2-1.2 in until there is 42-50-54-60-64 sts on a rnd.

When sleeve measures approx. 26-32-36-40-43 cm/10.2-12.6-14.2-15.7-16.9 in, bind off 6-6-8-8-8 sts mid under arm (3-3-4-4-4 sts both sides of the marker) = 36-44-46-52-56 sts. Put work aside, and knit same for the other sleeve.

Yoke

Change to clr 2. Slip all sts on same circular needle = 172-200-208-232-252 sts.

Beg from left from shoulder, and work back and forth in Garter st. Place markers on first row at each 4 seam lines (last one to the end of the row). Cast on 6 new sts after the last marker, and purl them on RS (and knit on WS) = buttonhole band.

Beg raglan-dec, and rep every 2nd row (= RS): (Note! **Not** at mid back marker)

K1 - K2tog,*work until 3 sts rem before - sl 2 sts tfl, slip them back on LH needle, K2togtbl - K2 - K2tog*, rep *-.*at each seam line until 3 sts rem before last marker, sl 2 sts tfl, slip them back on LH needle, K2togtbl - K1 - P1- knit rem sts. Rep dec, but make a buttonhole after approx. 3 cm/1.2 in on buttonhole band (make every buttonhole on RS row as foll: Work until 4 sts rem – bind off 2 sts (Next row: Cast on 2 new sts over the bound-off ones) – K2. Make buttonhole approx. every 5 cm/2 in altog. 3-3-3-4-4 times.

Dec for raglan 14-17-18-21-23 times = 60-64-64-64-68 sts + 6 sts for buttonhole band. Work 6 rows in Garter st.

Next RS row: Bind off first sts until 8-8-8-10-10 sts rem before first marker.

Cont with hood:

Remove all markers except the one mid back. End the row with 1 purl-st. After that work Garter st over all sts. Inc every 2nd row as foll: Work until 1 st rem before the marker, M1, K2, M1. Rep inc altog 8-8-10-10-12 times. Cont working in Garter st until hood measures approx. 18-20-23-24-26 cm/7.1-7.9-9.1-9.4-10.2 in.

Join top seam.

Sew under arm seams, and weave in all ends on WS.

Sew on buttons.

Viking Odin

Sweater

1307-8

Size:	2 – 4 – 6 – 8 – 10 – 12 yrs
Chest:	60 – 65 – 71 – 75 – 80 – 85 cm 23.6-25.6-28-29.5-31.5-33.5 in
Length:	36 – 40 – 45 – 50 – 54 – 58 cm 14.2-15.7-17.7-19.7-21.3-22.8 in
Sleeve length:	28 – 31 – 34 – 38 – 42 – 45 cm 11-12.2-13.4-15-16.5-17.7 in

ALTERNATIVE YARN: Viking Odin (100% wool, superwash), 100 g ball. Viking Eco Alpaca (100 % alpaca), 100 g skein. Viking Kid Mohair (70% kid mohair-18% merino wool-12% nylon), 50 g ball

Light Grey 813: 4 – 4 – 5 – 5 – 6 – 7 balls

Circular needle and double pointed needles size 5 and 5 ½ mm – US 8 and 9 – UK/Canadian 6 and 5

Gauge: 18 sts = approx. 10 cm/4 in over St st using needles size 5½ mm. **Check your gauge to ensure success.**

Using needles size 5 mm, cast on 100 – 104 – 116 – 120 – 128 – 136 sts. Work in rnds in K2,P2 rib approx. 4 – 4 – 5 – 5 – 5 – 6 cm/1.6-1.6-2-2-2-2.4 in. Change to needles size 5 ½ mm. Work in patt I, and inc evenly across 1st rnd number of sts to be 108 – 116 – 128 – 136 – 144 – 152 sts. Place markers each side, 54 – 58 – 64 – 68 – 72 – 76 sts for both front and back. When work measures approx. 22 – 25 – 29 – 33 – 36 – 39 cm/8.7-9.8-11.4-13-14.2-15.4 in (end patt I with 3 rnds in St st), divide work at sides for armholes. Finish back first.

Back: Inc number of sts for cable patt: 78 – 84 – 96 – 102 – 108 – 114 sts. Work back and forth in patt II until work measures approx. 36 – 40 – 45 – 50 – 54 – 58 cm/14.2-15.7-17.7-19.7-21.3-22.8 in. Knit 1 row over all sts, and dec all purl sts: *K2tog, K2, sl 1 st, k1, pss0*, rep *-* across the row.

Front: Work same as for back, **but** when work measures approx. 32 – 35 – 40 – 45 – 48 – 52 cm/12.6-13.8-15.7-17.7-18.9-20.5 in slip 18 – 18 – 20 – 20 – 20 – 22 mid sts on holder for neck edge. Finish each side separately. Bind off at neck edge every 2nd row 1x5 – 6 – 6 – 6 – 7 – 7 sts, 1x4 sts, 1x2 sts and 1x1 st. When front measures same as back, knit 1 row and dec all purl sts same as for back. Bind off.

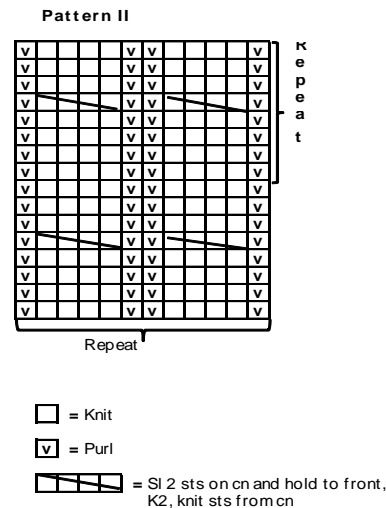
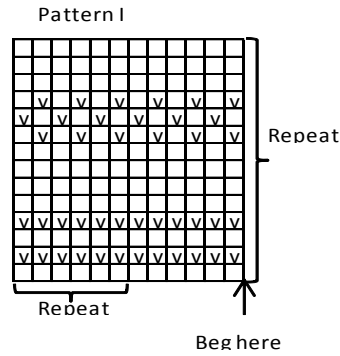
Work same for the other side, rev all shaping.

Sleeves: Using needles size 5 mm, cast on 32 – 32 – 32 – 36 – 36 – 40 sts. Work in rnds in K2,P2 rib approx. 4 – 4 – 4 – 5 – 5 – 5 cm/1.6-1.6-1.6-2-2-2 in. Change to needles size 5 ½ mm. Work in patt I, and inc evenly across 1st rnd number of sts to be 38 – 38 – 40 – 44 – 46 – 48 sts. Place a marker beg of rnd (= mid under sleeve). Inc 1 st both sides of the marker approx. every 4 – 3 – 3 – 3 ½ – 4 – 4 cm/1.6-1.2-1.2-1.4-1.6-1.6 in until there is 50 – 54 – 58 – 62 – 64 – 68 sts on a rnd, and sleeve measures approx. 28 – 31 – 34 – 38 – 42 – 45 cm/11-12.2-13.4-15-16.5-17.7 in. Bind off.

Finishing: Join shoulder seams.

Neck band: Using needles size 5 mm, pick or knit up approx. 68-72-76-76-80-80 sts. Work in rnds approx. 8 cm/3.1 in in K2,P2 rib. Bind off rather loosely in rib. Fold neck band in double, and sew on WS.

Sew on sleeves.



Viking Odin

Sweater with stripes

1307-9

Size:	2	4	6	8	10	12-14 yrs
Chest, approx.	60	64	71	76	82	87 cm
	23.6	25.2	28	29.9	32.3	34.3 in
Length, approx.	39	42	48	51	54	60 cm
	15.4	16.5	18.9	20.1	21.3	23.6 in
Sleeve length, approx.	28	31	34	38	42	45 cm
	11	12.2	13.4	15	16.5	17.7 in

ALTERNATIVE YARN: Viking Odin (100% wool, superwash), 100 g ball. Viking Eco Alpaca (100 % alpaca), 100 g skein. Viking Kid Mohair (70% kid mohair-18% merino wool-12% nylon), 50 g ball

Multiclr, 812	2	2	3	3	4	4 balls
Black, 803	2	2	2	3	3	3 balls

Circular needle and double pointed needles 5 and 5 ½ - US 8 and 9 – UK/Canadian 6 and 5

Gauge: 18 sts = approx. 10 cm/4 in over St st using needles size 5½ mm. **Check your gauge to ensure success.**

Using needles size 5½ and multiclr yarn, cast on 108-116-128-136-148-156 sts. Work 4 rnds in K2,P2 rib. Place markers each side, 54-58-64-68-74-78 sts for both back and front. Cont working in rnds in St st with patt stripes as charted. When work measures approx. 25 – 27 – 32 – 34 – 36 – 40 cm/7.9-10.6-12.6-13.4-14.2-15.7 in, divide work at sides for armholes. Finish back and front separately.

Back

Cont working back and forth until work measures approx. 39 – 42 – 48 – 51 – 54 – 60 cm/15.4-16.5-18.9-20.1-21.3-23.6 in. Bind off.

Front

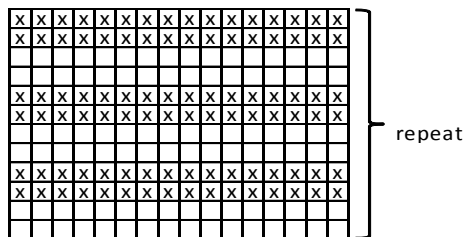
Work back and forth same as for back. When work measures approx. 34-37-43-45-48-54 cm/13.4-14.6-16.9-17.7-18.9-21.3 in, bind off mid 14-14-16-16-18-18 sts. Finish each side separately. Bind off at neck edge every 2nd row 1x3 sts, 1x2 sts and 1x1 st. When front measures same as back, bind off. Work same for the other side, rev all shaping.

Sleeves

Using needles size 5 ½ mm, cast on 28-32-32-36-36-40 sts. Work 4 rnds in K2,P2 rib. Work 1 rnd in St st, and inc evenly across number of sts to be 34 – 38 – 40 – 42 – 44 – 46 sts. Place a marker beg of rnd (= mid under sleeve). Work in patt as charted, and inc 1 st both sides of the marker approx. every 3 – 3 ½ – 3 ½ – 4 – 4 – 3 cm/1.2-1.4-1.4-1.6-1.6-1.2 in. Rep inc until there is 50 – 54 – 58 – 60 – 64 – 72 sts on a rnd, and sleeve measures 28 – 31 – 34 – 38 – 42 – 45 cm/11-12.2-13.4-15-16.5-17.7 in. Bind off.

Finishing: Sew shoulder seams.

Neck band: Using needles size 5 mm and multicl yarn, pick or knit up approx. 52-56-60-64-68-72 sts around neck edge. Work in rnds 3 cm/1.2 in in K2,P2 rib. Bind off rather loosely in rib. Sew on sleeves, and weave in all ends on WS.



□ = multicl
 x = black

Viking Odin

Scarf and hat

1307-10

Size: circumference, approx. 60 cm / 23.6 in

ALTERNATIVE YARN: Viking Odin (100% wool, superwash), 100 g ball. Viking Eco Alpaca (100 % alpaca), 100 g skein. Viking Kid Mohair (70% kid mohair-18% merino wool-12% nylon), 50 g ball.

Grey, 815 : 5 balls

Circular needle and double pointed needles size 5 and 5 ½ mm – US 8 and 9 – UK/Canadian 6 and 5

Gauge: 18 sts = approx. 10 cm/4 in over St st using needles size 5½ mm. Check your gauge to ensure success.

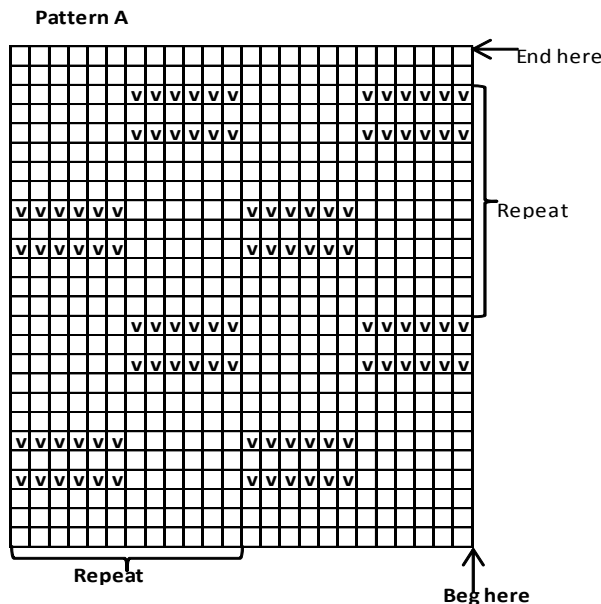
HAT

Using needles size 5 mm, cast on 108 sts. Work in rnds approx. 6 cm/2.4 in in K2,P2 rib. Change to needles size 5½ mm. Work in

patt A until hat measures approx. 24 cm/9.4 in. Dec for crown: Knit all sts tog in pairs. Work 1 rnd in St st. Rep dec until 14 sts rem. Break yarn, thread through rem sts, pull yarn tightly, and weave in on WS.

SCARF: 160 X 28 cm/62.9 X 11 in

Using needles size 5 mm, cast on 288 sts. Work 10 rows in Garter st. Change to needles size 5½ mm, and cont working in patt A until work measures approx. 26 cm/10.2 in (end as charted). Change again to needles size 5 mm, and work 10 rows in Garter st. Bind off.



□ = Knit
 v = Purl

Viking Odin

Sweater

1307-11

Size:	2	4	6	8	10	12-14 yrs
Chest, approx.	60	64	71	76	82	87 cm
	23.6	25.2	28	29.9	32.3	34.3 in
Length, approx.	39	42	48	51	54	60 cm
	15.4	16.5	18.9	20.1	21.3	23.6 in
Sleeve length, approx.	28	31	34	38	42	45cm
	11	12.2	13.4	15	16.5	17.7 in

ALTERNATIVE YARN: Viking Odin (100% wool, superwash), 100 g ball. Viking Eco Alpaca (100 % alpaca), 100 g skein. Viking Kid Mohair (70% kid mohair-18% merino wool-12% nylon), 50 g ball

Blue, 825 4 5 5 6 6 balls

Circular needle and double pointed needles size 5 ½ mm – US 9 – UK/Canadian 5

Gauge: 18 sts = approx. 10 cm/4 in over St st using needles size 5 ½ mm. Check your gauge to ensure success.

Back

Using needles size 5½ mm, cast on 54-58-64-68-74-78 sts. Work 8 rows in Garter st. Cont working back and forth in St st and patt

as charted until work measures approx. 10-10-12-12-14-14 cm/4-4-4.7-4.7-5.5-5.5 in. Leave work aside.

Front

Work same as for back (Note! Finish with same row as back).

Body

Slip back and front on same circular needle, and cont working in rnds in St st and patt as charted until work measures approx. 25 – 27 – 32 – 34 – 36 – 40 cm/9.8-10.6-12.6-13.4-14.2-15.7 in.

Divide work at sides for armholes. Finish back and front separately.

Back

Cont working back and forth in patt until work measures approx. 39 – 42 – 48 – 51 – 54 – 60 cm/15.4-16.5-18.9-20.1-21.3-23.6 in. Bind off.

Front

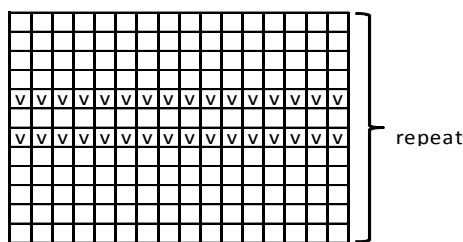
Work same as for back. When work measures approx. 30-33-38-41-42-48 cm/11.8-13-15-16.1-16.5-18.9 in, bind off mid st. Finish each side separately. Dec 1 st at split edge inside selvage st approx. 2-2-2-2 ½-2 ½-2 ½ cm/ 0.8-0.8-0.8-1-1-1 in altog. 2 times. When split measures approx. 4-4-6-6-6-8 cm/1.6-1.6-2.4-2.4-2.4-3.1 in, bind off at neck edge every 2nd row 1x6-6-7-7-8-8 sts, 1x3 sts, 1x2 sts and 1x1 st. When front measures same as back, bind off. Work same for the other side, rev all shaping.

Sleeves: Using needles size 5 ½ mm, cast on 28-32-32-36-36-40 sts. Work 8 rnds in Garter st. Work 1 rnd in St st, and inc evenly across number of sts to be 34 – 38 – 40 – 42 – 44 – 46 sts. Place a marker beg of rnd (= mid under sleeve). Work in patt as charted, and inc 1 st both sides of the marker approx. every 3 – 3 ½ – 3 ½ – 4 – 4 – 3 cm/1.2-1.4-1.4-1.6-1.6-1.2 in. Rep inc until there is 50 – 54 – 58 – 60 – 64 – 72 sts on a rnd, and sleeve measures 28 – 31 – 34 – 38 – 42 – 45 cm/11-12.2-13.4-15-16.5-17.7 in. Bind off.

Finishing: Sew shoulder seams.

Neck band: Crochet sc-rnd to neck edge and split mid front, and one rnd in crab st.

Sew on sleeves, and weave in all ends on WS.



□ = knit on RS, purl on WS

▣ = Purl on RS, knit on WS

Viking Odin

Sweater with stripes

1307-12

Size:	2	4	6	8	10	12-14 yrs
Chest, approx.	60	64	71	76	82	87 cm
	23.6	25.2	28	29.9	32.3	34.3 in
Length, approx.	39	42	48	51	54	60 cm
	15.4	16.5	18.9	20.1	21.3	23.6 in
Sleeve length, approx.	28	31	34	38	42	45 cm
	11	12.2	13.4	15	16.5	17.7 in

ALTERNATIVE YARN: Viking Odin (100% wool, superwash), 100 g ball. Viking Eco Alpaca (100 % alpaca), 100 g skein. Viking Kid Mohair (70% kid mohair-18% merino ull-12% nylon), 50 g ball

Multiclr, 823	4	4	5	5	6 balls
White, 800	1	1	1	2	2 balls

Circular needle and double pointed needles size 5 and 5 ½ mm – US 8 and 9 – UK/Canadian 6 and 5

Gauge: 18 sts = approx. 10 cm/4 in over St st using needles size 5 ½ mm. **Check your gauge to ensure success.**

Using needles size 5 ½ mm and multiclr yarn, cast on 108-116-128-136-148-156 sts. Work 4 rnds in K2,P2 rib. Place makers each side, 54-58-64-68-74-78 sts for both front and back. Cont working in St st and patt stripes as charted. When work measures approx. 25 – 27 – 32 – 34 – 36 – 40 cm/9.8-10.6-12.6-13.4-14.2-15.7 in, divide work at sides for armholes, and finish back and front separately.

Back

Cont working back and forth until work measures approx. 39 – 42 – 48 – 51 – 54 – 60 cm/15.4-16.5-18.9-20.1-21.3-23.6 in.

Bind off.

Front

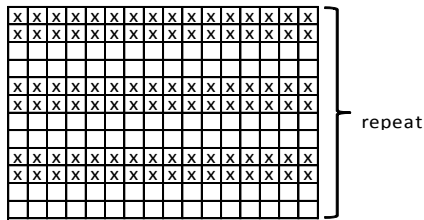
Work back and forth same as for back. When work measures approx. 34-37-43-45-48-54 cm/13.4-14.6-16.9-17.7-18.9-21.3 in, bind off 14-14-16-16-18-18 mid sts for neck edge. Bind off at neck edge every 2nd row 1x3 sts, 1x2 sts and 1x1 st. When work measures same as back, bind off. Work same for the other side, rev all shaping.

Sleeves

Using needles size 5 ½ mm, cast on 28-32-32-36-36-40 sts. Work 4 rnds in K2,P2 rib. Work 1 rnd in St st, and inc evenly across number of sts to be 34 – 38 – 40 – 42 – 44 – 46 sts. Place a marker beg of rnd (= mid under sleeve). Work in patt as charted, and inc 1 st both sides of the marker approx. every 3 – 3 ½ – 3 ½ – 4 – 4 – 3 cm/1.2-1.4-1.4-1.6-1.6-1.2 in. Rep inc until there is 50 – 54 – 58 – 60 – 64 – 72 sts on a rnd, and sleeve measures 28 – 31 – 34 – 38 – 42 – 45 cm/11-12.2-13.4-15-16.5-17.7 in. Bind off.

Finishing: Sew shoulder seams.

Neck band: Using needles size 5 mm and multiclr yarn, pick or knit up approx. 52-56-60-64-68-72 sts around neck edge. Work in rnds 3 cm/1.2 in K2,P2 rib. Bind off rather loosely in rib. Sew on sleeves, and weave in all ends on WS.



□ = multicl
 ⊗ = white

Viking Odin

Scarf and hat

1307-13

Size: 2/4 – 6/10 yrs

Circumference: 47 – 50 cm

18.5-19.7 in

Scarf: 15 X 150 – 18 X 160 cm

5.9 X 59 – 7.1 X 63 in

ALTERNATIVE YARN: Viking Odin (100% wool, superwash), 100 g ball. Viking Eco Alpaca (100 % alpaca), 100 g skein. Viking Kid Mohair (70% kid mohair-18% merino wool-12% nylon), 50 g ball

Multicl, 827 : 4 – 4 balls

Circular needle and double pointed needles size 5 and 5 ½ mm – US 8 and 9 – UK/Canadian 6 and 5

Gauge: 18 sts = approx. 10 cm/4 in over St st using needles size 5½ mm. **Check your gauge to ensure success.**

SCARF

Using needles size 5 ½ mm, cast on 54 – 64 sts. Work in rnds in St st until work measures approx. 150 – 160 cm/59-63 in. Bind off.

Use double yarn, and tie approx. 12 cm/4.7 in long fringes, 12 to each end. Tie fringes through both sides so that the scarf becomes flat.

HAT

Using needles size 5 mm, cast on 80 – 84 sts. Work in rnds approx. 7-8 cm/2.8-3.1 in in K2,P2 rib. Change to needles size 5½ mm. Work 1 rnd in St st, and inc evenly across number of sts to be 84 – 90 sts. When work measures approx. 24 – 26 cm/9.4-10.2 in, dec for crown: Knit all sts tog in pairs. Work 1 rnd in St st. Rep dec until 21 – 23 sts rem. K1, and rep dec = 11 – 12 sts rem. Break yarn, thread it through rem sts, pull the yarn tightly, and weave in on WS. Make a large pom-pom and fasten it on top.

Viking Odin

Poncho/vest

1307-14

Size: 2/4 – 6/8 – 10 – 12/14 yrs

Chest: 56 – 66 – 72 – 80 cm

22-26-28.3-31.5 in

ALTERNATIVE YARN: Viking Odin (100% wool, superwash), 100 g ball. Viking Eco Alpaca (100 % alpaca), 100 g skein. Viking Kid Mohair (70% kid mohair-18% merino wool-12% nylon), 50 g ball

Multicl, 833 : 3 – 3 – 4 – 5 balls

Circular needle and double pointed needles size 5 and 5 ½ mm – US 8 and 9 – UK/Canadian 6 and 5

Gauge: 18 sts = approx. 10 cm/4 in over St st using needles size 5½ mm. **Check your gauge to ensure success.**

BACK

Using needles size 5 ½ mm, cast on 4 sts. Work back and forth in patt A until there is 56 – 66 – 72 – 80 sts on a row. Place markers each side. Cont working without inc until work measures approx. 15 – 16 – 18 – 20 cm /5.9-6.3-7.1-7.9 in (measured from the markers). Leave work aside.

FRONT

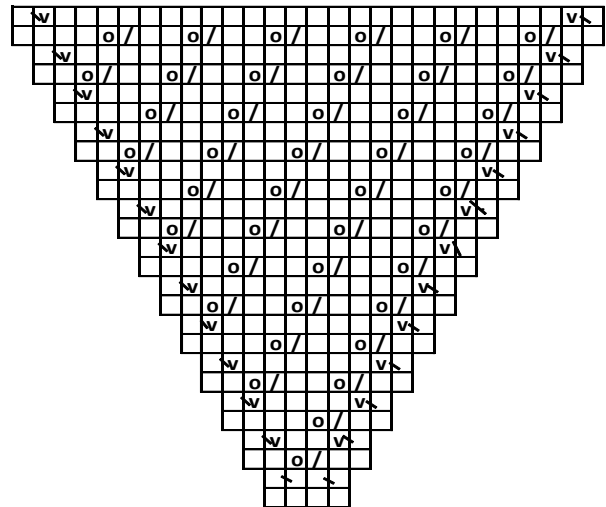
Work same as for back, **but** when work measures approx. 12 – 12 – 14 – 16 cm/4.7-4.7-5.5-6.3 in (measured from the markers), slip 10 – 12 – 12 – 12 mid sts on holder for neck edge. Finish each side separately. Bind off at neck edge every 2nd row 1x4 – 5 – 5 – 5 sts, 1x2 sts and 1x1 st. Work until front measures same as back. Work same for the other side, rev all shaping.

Finishing : Join shoulder seams.

Armhole bands : Using needles size 5 mm, pick or knit up approx. 54 – 58 – 64 – 72 sts, from left side marker on front to right side marker on back. Work in rnds approx. 6 cm/2.4 in in K1,P1 rib. Bind off in rib. Work same for the other armhole band.

Neck band : Using needles size 5 mm, pick or knit up approx. 58 – 68 – 68 – 68 sts. Work in rnds approx. 16 cm/6.3 in in K2,P2 rib. Bind off in rib.

Pattern A



⊞ = K2tog
 ⊞ = 1 yo
 □ = Knit on RS, purl on WS
 ⊞ = M1
 ⊞ = Purl on RS, knit on WS

Viking Odin

Sweater

1307-15

Size:	S	M	L	XL	XXL
Chest	98	107	115	124	133 cm
	38.6	42.2	45.3	48.8	52.3 in
Length:	68	68	70	70	70 cm
	26.8	26.8	27.6	27.6	27.6 in
Sleeve length:	50	52	52	54	54 cm
	19.7	20.5	20.5	21.3	21.3 in

ALTERNATIVE YARN: Viking Odin (100% wool, superwash), 100 g ball. Viking Eco Alpaca (100 % alpaca), 100 g skein. Viking Kid Mohair (70% kid mohair-18% merino wool-12% nylon), 50 g ball

Blue, 825	7	8	8	9	10 balls
Off-White, 802	2	2	2	3	3 balls

Circular needle and double pointed needles size 5 and 5 ½ mm – US 8 and 9 – UK/Canadian 6 and 5

Gauge: 18 sts = approx. 10 cm/4 in over St st using needles size 5½ mm. **Check your gauge to ensure success.**

Note! Sweater is worked in rnds, and cut open in the end, also mid front.

SWEATER

Using needles size 5 mm and blue yarn, cast on 176-192-208-224-240 sts. Work 6 cm/2.4 in K1,P1 rib. Change to needles size 5½ mm. Place markers each side, 89-97-105-113-121 sts for front, and 87-95-103-111-119 sts for back. Cont working in patt I as charted until work measures approx. 37 cm/14.6 in. Work patt II as charted, and after that in St st with blue yarn, until work measures given length.

Sleeves

Using needles size 5 mm and blue yarn, cast on 38-38-40-40-44 sts. Work 6 cm/2.4 in in K1,P1 rib. Work 1 rnd in St st, and inc evenly across number of sts to be 53-55-57-59-59 sts. Cont working in patt I. Inc 1 st both the marker mid under sleeve approx. every 3-3-3-3 ½ -3 cm/1.2-1.2-1.2-1.4-1.2 in until there is altog. 81-83-85-85-89 sts on a rnd. Turn inside out, and work 4 rnds in St st with basic clr for seam allowance. Bind off rather loosely.

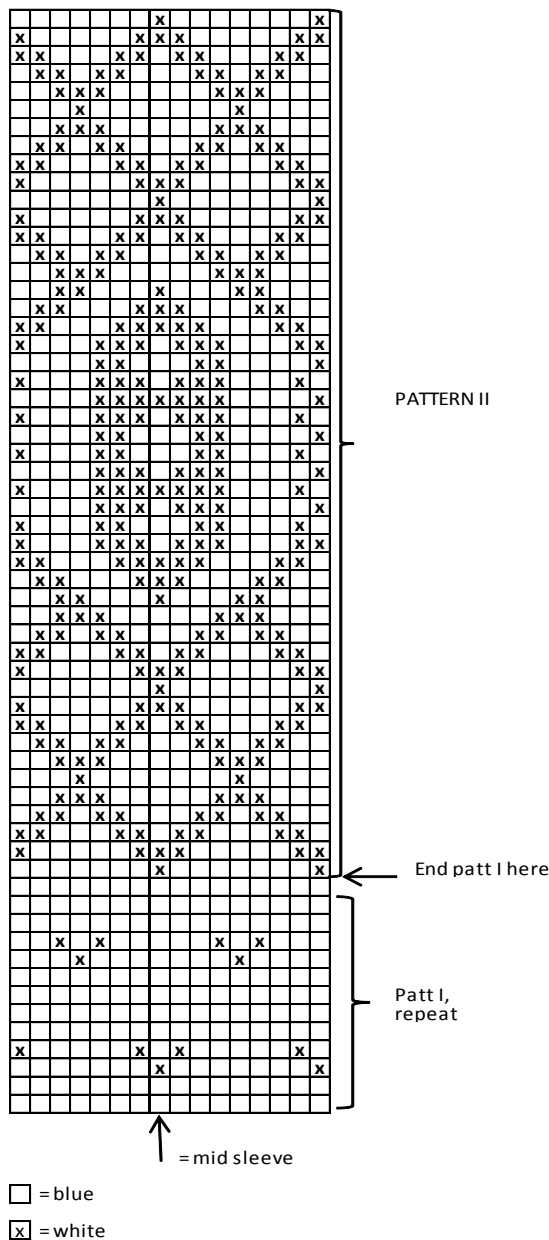
Finishing

Sew 4 dense seams with a sewing machine around armholes, approx. 23-23-24-24-25 cm/9.1-9.1-9.4-9.4-9.8 in (measure width from sleeves).

Sew dense seams around neck edge as foll: Place a marker mid front. Measure approx. 11 cm/4.3 in from mid front towards each side (= width of neck edge 22 cm/8.7 in). Slant neck edge approx. 20 cm/7.9 in downwards, 12 cm/4.7 in wide from the lower edge. Cut off all extras from neck edge.

Shawl collar: Beg from RS (right front), using needles size 5 mm and blue yarn, pick or knit up approx. 136-140-140-144-144 sts. Work back and forth in K1,P1 rib until collar measures approx. 12 cm/4.7 in. Bind off rather loosely in rib.

Place collar edges on top each other on front, and sew to body. Weave in all ends on WS. Sew bias band over cut edges.



□ = blue

☒ = white

Viking Odin

Scarf and hat

1306-16

Size:	Man
Circumference:	56 cm
	22 in
Scarf :	20 X 180 cm
	7.9 X 70.9 in

ALTERNATIVE YARN: Viking Odin (100% wool, superwash), 100 g ball. Viking Eco Alpaca (100 % alpaca), 100 g skein Viking Kid Mohair (70% kid mohair-18% merino wool-12% nylon), 50 g ball

Black, 803 : 5 balls

Circular needle and double pointed needles size 5 and 5 ½ mm – US 8 and 9 – UK/Canadian 6 and 5

Gauge: 18 sts = approx. 10 cm/4 in over St st using needles size 5½ mm. **Check your gauge to ensure success.**

SCARF

Using needles size 5 ½ mm, cast on 64 sts. Work back and forth approx. 180 cm/70.9 in in K4,P4 rib. Bind off in rib.

HAT

Using needles size 5 mm, cast on 96 sts. Work in rnds in K4,P4 rib. When work measures approx. 6 cm/2.4 in, change to needles size 5½ mm. When work measures approx. 24 cm/9.4 in, dec for crown: *Knit 1st st tog with last purl st, K2, sl last knit st, knit 1st purl st, pssso, P2*, rep *-* across the rnd. Work 1 rnd in K4,P2 rib. Rep dec without 2 purl sts. Now all purl sts have been decreased. Work 1 rnd in St st. Next rnd: Knit all sts tog in pairs. Knit 1 rnd. Rep dec until 12 sts rem. Break yarn, and thread it through rem sts, pull yarn slightly, and weave in on WS.

Viking Odin

Scarf and hat

1307-17

Size : Woman
Scarf : 25 X 180 cm
9.8 X 70.9 in

ALTERNATIVE YARN: Viking Odin (100% wool, superwash), 100 g ball. Viking Eco Alpaca (100 % alpaca), 100 g skein. Viking Kid Mohair (70% kid mohair-18% merino wool-12% nylon), 50 g ball

Light Violet, 877 : 4 balls

Circular needle and double pointed needles size 5 and 5 ½ mm – US 8 and 9 – UK/Canadian 6 and 5

Gauge: 18 sts = approx. 10 cm/4 in over St st using needles size 5½ mm. **Check your gauge to ensure success.**

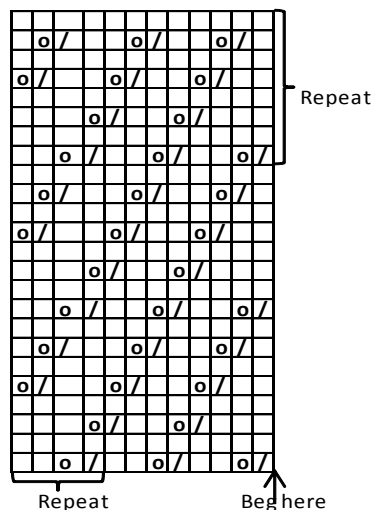
SCARF

Using needles size 5 mm, cast on 46 sts. Work approx. 5 cm/2 in in K2,P2 rib. Change to needles size 5½ mm. Cont working in K2,P2 rib over first and last 4 sts, and patt A over rem 38 sts. Cont working as established until work measures approx. 175 cm/68.9 in. Change to needles size 5 mm. Work in K2,P2 rib over all sts until work measures approx. 180 cm/70.9 in. Bind off in rib.

HAT

Using needles size 5 mm, cast on 100 sts. Work approx. 4 cm/1.6 in in K2,P2 rib. Change to needles size 5½ mm. Work in patt A until hat measures approx. 22 cm/8.7 in. Beg dec for crown: *K2, K2tog*, rep *-* across the rnd. Work 1 rnd in St st. Next rnd: *K1, K2tog*, rep *-* across the rnd. Work 1 rnd in St st. Next rnd: Knit all sts tog in pairs. Work 1 rnd in St st. Rep dec = 25 sts rem. Break yarn, thread through rem sts, tighten yarn slightly, and weave in on WS.

Pattern A



☐ = K2tog
 ◻ = 1 vo
 □ = Knit on RS, purl on WS

Viking Odin

Scarf, hat and wrist warmers 1306-18

Size: Woman
Circumference : 56 cm
22 in
Scarf : 15 X 180 cm
5.9 X 70.9 in

ALTERNATIVE YARN: Viking Odin (100% wool, superwash), 100 g ball. Viking Eco Alpaca (100 % alpaca), 100 g skein. Viking Kid Mohair (70% kid mohair-18% merino wool-12% nylon), 50 g ball

Multiclr, 867 : 5 balls

Circular needle size 5 ½ mm – US 9 – UK/Canadian 5, and crochet hook size 3 mm – US C/2 or D/3 – UK/Canadian 11

Gauge: 18 sts = approx. 10 cm/4 in over St st using needles size 5½ mm. **Check your gauge to ensure success.**

SCARF

Using needles size 5½ mm, cast on 54 sts. Work in rnds in St st until work measures approx. 170 cm/67 in. Bind off.

Crochet edge for each end:

1st rnd: Ch3 (= 1st dc), 2 dc (1 to each st), *ch3, skip 3 sts, 3 dc*, rep *-* across the rnd, end with 1 sl st to first dc.

2nd rnd: Ch6, *3 dc to prev rnd's 3 ch-sts, ch3*, rep *-* across the rnd, end with 2 dc and 1 sl st to 3rd ch-st beg of rnd.

3rd rnd: Ch3 (= 1 dc), 2 dc, *ch3, 3 dc*, rep *-* across the rnd, end with ch3 and 1 sl st to first dc.

Rep 2nd and 3rd rnds until you have worked altog 6 rnds in height. Weave in all ends on WS.

HAT

Using needles size 5 ½ mm, cast on 96 sts. Work in rnds in St st. When work measures approx. 20 cm/7.9 in, dec for crown as foll: *K6, K2tog*, rep *-* across the rnd. Work 1 rnd in St st.

Rep dec with 1 st less between dec until 48 sts rem. Next rnd: Knit all sts tog in pairs. Knit 1 rnd. Rep dec until 12 sts rem. Break yarn, thread through rem sts, tighten yarn slightly, and weave in on WS.

Crochet edge:

1st rnd: *3 dc (1 to each st), ch3, skip 3 sts*, rep *-* across the rnd, end with 1 sl st to first dc.

2nd rnd: Ch6, *3 dc to prev rnd's 3 ch-sts, ch3*, rep *-* across the rnd, end with 2 dc and 1 sl st to 3rd ch-st beg of rnd.

3rd rnd: Ch3 (= 1 dc), 2 dc, *ch3, 3 dc*, rep *-* across the rnd, end with ch3 and 1 sl st to first dc.

Weave in all ends on WS.

WRISTWARMERS

Ch36. Join into a ring with 1 sl st.

1st rnd: Ch3 (= 1st dc) + 2 dc, *ch3, skip 3 sts, 3 dc*, rep *-* across the rnd, end with 1 sl st to 3rd ch-st beg of rnd.

2nd rnd: Ch6, *3 dc to prev rnd's 3 ch-sts, ch3*, rep *-* across the rnd, end with 2 dc and 1 sl st to 3rd ch-st beg of rnd (= 1st dc).

3rd rnd: Ch3 (= 1st dc) + 2 dc, *ch3, 3 dc*, rep *-* across the rnd, end with ch3 and 1 sl st to 1st dc (= 3rd ch-st).

Rep 2nd and 3rd rnds until you have worked altog. 8 rnds in height.

9th rnd: Inc for thumb: Ch3 (= 1st dc) + 2 dc, ch3, 6 dc over next 3 ch-sts, ch3, 6 dc over next 3 ch-sts, *ch3, 3 dc*, rep *-* across the rnd, end with ch3, and 1 sl st to 3rd ch-st (= 1st dc).

Work 2nd and then 3rd rnd, **but** now there will be 2 holes over prev rnd's both 6 dcs for thumb.

12th rnd: Ch6, 3 dc, ch3, 6 dc into next 3 ch-sts, ch3, 6 dc into next 3 ch-sts, *ch3, 3 dc*, rep *-* across the rnd, and end with 1 sl st to 3rd ch-st (= 1st dc).

13th rnd: Work same as 3rd rnd, **but** there will be 2 holes over prev rnd's both 6 dcs for thumb.

14th rnd: Ch6, 3 dc, ch3, 3 dc, ch3, skip (3 dc-ch3-3 dc) from prev rnd = opening for thumb. *3 dc, ch3*, rep *-* across the rnd, end with 2 dc and 1 sl st to 3rd ch-st (1st dc). There is now 7 patt reports on a rnd.

15th rnd: Rep 3rd rnd

16th rnd: Rep 2nd rnd

17th rnd: Rep 3rd rnd

18th rnd: Rep 2nd rnd

Viking Odin

Scarf and hat

Size: 20 X 180 cm

7.9 X 70.9 in

ALTERNATIVE YARN: Viking Odin (100% wool, superwash), 100 g ball. Viking Eco Alpaca (100 % alpaca), 100 g skein. Viking Kid Mohair (70% kid mohair-18% merino wool-12% nylon), 50 g ball.

Multiclr, 869 : 5 balls

Circular needle and double pointed needles size 5 and 5 ½ mm – US 8 and 9 – UK/Canadian 6 and 5

Gauge: 18 sts = approx. 10 cm/4 in over St st using needles size 5½ mm. **Check your gauge to ensure success.**

SCARF

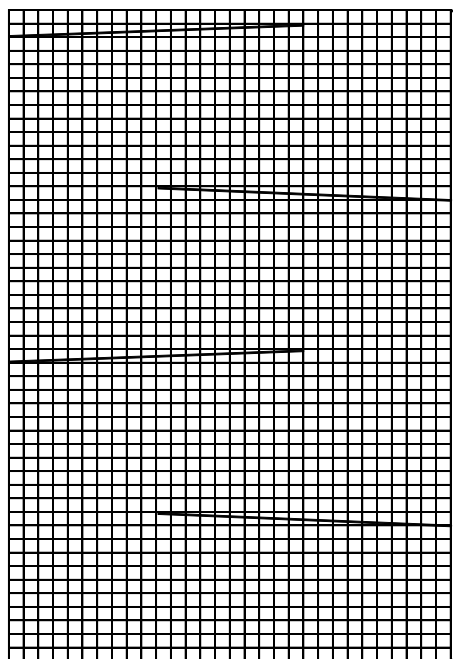
Using needles size 5 ½ mm, cast on 50 sts. Work as foll: Garter st over 10 sts, Patt A as charted over 30 sts, and Garter st over 10 sts. Cont working back and forth as established until work measures approx. 180 cm/70.9 in. Bind off.

Using double yarn, tie approx. 12 cm/4.7 in long fringes, 12 to each end. Tie fringes through double cables so that the ends will be same width as rest of the scarf.

HAT

Using needles size 5 mm, cast on 84 sts. Work in rnds approx. 4 cm/1.6 in in K2,P2 rib. Change to needles size 5½ mm. Work in patt as foll: Inc 15 sts over first 15 sts = patt A (30 sts), and work Garter st over rem sts. When work measures approx. 20 cm/7.9 in, work 2 rnds in St st, and dec on 1st rnd 15 sts over patt A. Beg crown dec: Knit all sts tog in pairs. Knit 1 rnd. Rep dec until 21 sts rem. Knit 1 rnd. Rep dec = 11 sts rem. Break yarn, thread through rem sts, tighten the yarn slightly, and weave in on WS.

Pattern A



□ = Knit on RS, purl on WS

▬ = Sl 10 sts on cn and hold to front,

K10, knit sts from cn

▬ = Sl 10 sts on cn and hold to back,

K10, knit sts from cn

Viking Odin

Scarf and hat

1307-19

Viking Odin

Cowl and hat

1307-20

Size: 2/4 – 6/10 yrs

Circumference: 47 – 50 cm

18.5-19.7 in

ALTERNATIVE YARN: Viking Odin (100% wool, superwash), 100 g ball. Viking Eco Alpaca (100 % alpaca), 100 g skein. Viking Kid Mohair (70% kid mohair-18% merino wool-12% nylon), 50 g ball

Multiclr, 863 :

3 balls

Knitting needles size 5 and 5 ½ mm – US 8 and 9 – UK/Canadian 6 and 5

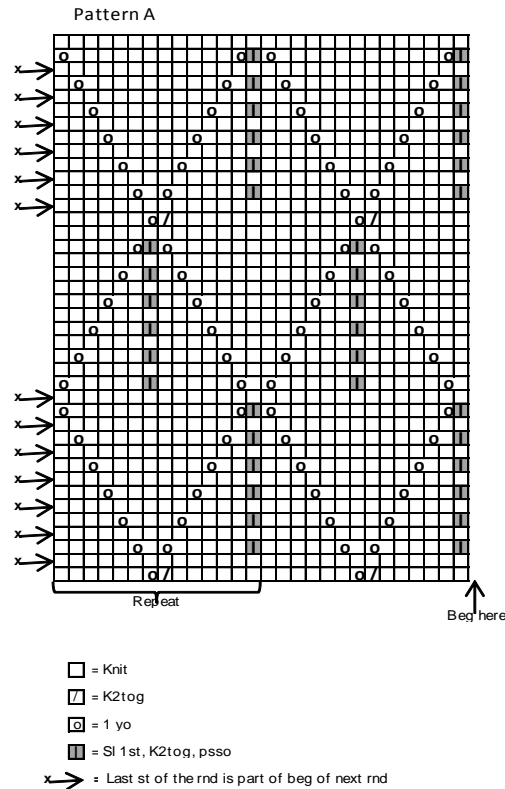
Gauge: 18 sts = approx. 10 cm/4 in over St st using needles size 5½ mm. **Check your gauge to ensure success.**

COWL

Using needles size 5 mm, cast on 196 sts. Work in rnds approx. 3 cm/1.2 in in K2,P2 rib. Change to needles size 5½ mm, and work in patt A. Change to needles size 5 mm, and work approx. 3 cm/1.2 in in K2,P2 rib. Bind off in rib.

HAT

Using needles size 5 mm, cast on 80 – 84 sts. Work in rnds approx. 6 cm/2.4 in in K2,P2 rib. Change to needles size 5½ mm. Work 1 rnd in St st, and inc number of sts to be 84 – 84 sts. Work patt A. Dec for crown:
Knit all sts tog in pairs. Knit 1 rnd. Rep dec = 21 sts on a rnd. Break yarn, thread through rem sts, tighten the yarn slightly, and weave in on WS.



1st row: Knit.

2nd row: Purl first sts tog, purl until 1 st rem, inc 1 st = knit last st tfl, and again tfl.

3rd row: Knit.

4th row: Rep 2nd row.

5th row: Knit.

6th row: Rep 2nd row.

Change to multicl.

7th row: Purl.

8th row: Knit first 2 sts togtbl, knit until 1 st rem, inc 1 st = knit last st tfl, and again tfl.

9th row: Purl.

10th row: Rep 8th row.

11th row: Purl.

12th row: Rep 8th row.

Change to cherry clr yarn.

Rep these 12 rows (with stripes) altog. 7 times for the smaller size and 8 times for bigger size.

Sew tog bound-off and cast-on edges.

Lower edge: Using needles size 5 mm and cherry clr yarn, pick up 80 (88) sts. Work approx. 4 (5) cm/1.6 (2) in in K2,P2 rib.

Draw a thread through top of the hat, tighten it, and weave in on WS.

Make a pom-pom using multicl yarn, and fasten it on top.

ROUND SCARF

Using needles size 5½ mm and cherry clr yarn, cast on 44 sts. Cont working back and forth with same inc-dec striped patt as for hat. When work measures approx. 150 cm/59.1 in (ending with a stripe report), bind off.

Sew into a ring (= join bound-off and cast-on edges).

Edge around scarf: Using needles size 5½ mm and cherry clr, pick or knit up approx. 5 sts per ach stripe (number of sts must be multiple by 4). Work in rnds approx. 3 cm/1.2 in in K2,P2 rib. Bind off.

Work same for the other edge.

Weave in all ends on WS.

Viking Odin

Hat and scarf

1307-21

Size 2-6 yrs 6-10 yrs

ALTERNATIVE YARN: Viking Odin (100% wool, superwash), 100 g ball. Viking Eco Alpaca (100 % alpaca), 100 g skein. Viking Kid Mohair (70% kid mohair-18% merino wooll-12% nylon), 50 g ball.

Cherry, 864 2 2 balls
Multicl, 857 2 2 balls

Double pointed needles and circular needle size 5 ½ mm – US 9 – UK/Canadian 5

Gauge: 18 sts = approx. 10 cm/4 in over St st using needles size 5½ mm. **Check your gauge to ensure success.**

HAT

Using needles size 5½ mm and cherry clr yarn, cast on 38 (44) sts. Work back and forth as foll:

Viking Odin

Cowl and hat

1307-22

Size: 2/4 – 6/10 yrs
Circumference: 47 – 50 cm
18.5-19.7 in

ALTERNATIVE YARN: Viking Odin (100% wool, superwash), 100 g ball. Viking Eco Alpaca (100 % alpaca), 100 g skein. Viking Kid Mohair (70% kid mohair-18% merino wool-12% nylon), 50 g ball.

Cherry, 864 : 3 balls

Needles size 5 and 5 ½ mm – US 8 and 9 – UK/Canadian 6 and 5

Gauge: 18 sts = approx. 10 cm/4 in over St st using needles size 5½ mm. Check your gauge to ensure success.

COWL

Using needles size 5 mm, cast on 62 – 66 sts. Work back and forth approx. 7 cm/2.8 in in K2,P2 rib. Leave work aside, and knit same for another piece (= front and back) .

Beg with back. Change to needles size 5½ mm, work St st over 62 – 66 sts (place a marker), cast on 34 – 36 new sts (place a

marker), St st over next 62 – 66 sts (place a marker), and cast on 34 – 36 new sts (place a marker) = 192 – 204 sts.

Work in rnds in patt A over all sts, and **same time** beg raglan-dec at each 4 seam lines: Work until 2 sts rem before a marker, sl 1 st, K1, pss0, K2tog. Rep dec at all 4 markers every 2nd rnd until 64 – 68 sts rem. Change to needles size 5 mm. Work in rnds approx. 10-12 cm/4-4.7 in in K2,P2 rib. Bind off in rib.

HAT

Using needles size 5 mm, cast on 80 – 84 sts. Work in rnds approx. 6 cm/2.4 in in K2,P2 rib. Change to needles size 5½ mm. Cont working in patt A until work measures approx. 15 – 16 cm/5.9-6.3 in. Dec for crown: Divide sts in 4 parts, 20-21 sts for each part. Cont working in patt A, and **same time** rep raglan-dec at each 4 markers until 8 – 12 sts rem on a rnd. Break yarn, thread through rem sts, tighten the yarn slightly, and weave in on WS.

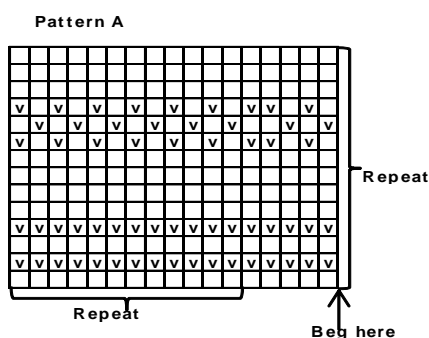
sts, K4 = 46 sts. Change to needles size 5 mm. Work approx. 9 cm/3.5 in in K2,P2 rib. Bind off in rib.

WRIST WARMERS

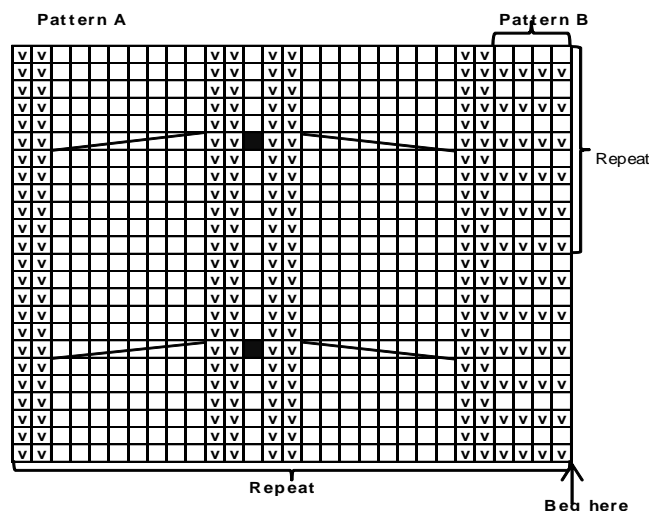
Using needles size 5 mm, cast on 40 sts. Work in rnds approx. 4 cm/1.6 in in K2,P2 rib. Change to needles size 5½ mm. Inc for cable patt as foll: Work K2,P2 rib over 14 sts, inc 7 sts evenly over next 26 sts (= patt A + patt B, 33 sts). Cont working as established until work measures approx. 17 cm/ in. Next rnd: K2,P2 rib over 14 sts, dec 7 sts evenly over next 33 sts. Cont working in K2,P2 rib over all sts until work measures approx. 20 cm/7.9 in. Bind off in rib.

HEADBAND Circumference: 44 – 48 cm/17.3-18.9 in

Using needles size 5½ mm, cast on 33 sts. Work in patt A over first 29 sts, and in patt B over last 4 sts. Cont working as established until work measures approx. 44 – 48 cm/17.3-18.9 in. Bind off. Sew bound-off sts to cast-on edge.



□ = Knit
 ▣ = Purl



□ = Knit on RS, purl on WS
 ▣ = Purl on RS, knit on WS
 ■ = 1 bobble (knit same st 3 times: K1f1, K1b1, K1f1 = 3 sts)
 P3, turn, K3, turn, P3,
 sl 1 st, K2tog, pss0 = 1 st
 □□□□□□ = Sl 4 sts on cn and hold to front, K4, knit sts from cn
 □□□□□□ = Sl 4 sts on cn and hold to back, K4, knit sts from cn

Viking Odin

1307-23

Scarf, headband and wrist warmers

Size: Child

ALTERNATIVE YARN: Viking Odin (100% wool, superwash), 100 g ball, Viking Eco Alpaca (100 % alpaca), 100 g skein, Viking Kid Mohair (70% kid mohair-18% merino wool-12% nylon), 50 g ball

White, 800 : 5 balls

Circular needle and double pointed needles size 5 and 5½ mm – US 8 and 9 – UK/Canadian 6 and 5

Gauge: 18 sts = approx. 10 cm/4 in over St st using needles size 5½ mm. Check your gauge to ensure success.

SCARF: 25 X 160cm/9.8 X 63 in

Using needles size 5 mm, cast on 46 sts. Work back and forth approx. 9 cm/3.5 in K2,P2 rib. Change to needles size 5½ mm. Inc for cable patt on next row (= WS) as foll: P4, inc 8 sts evenly across next 17 sts, P4, cont working in purl sts and in 8 sts evenly across next 17 sts, end with P4. Next row (= RS): Patt A over 58 sts, end with 4 sts in patt B. Rep until scarf measures approx. 150 cm/59.1 in (end patt as charted – it doesn't matter even if scarf turns out little bit longer). Next RS row: K4, dec 8 sts evenly across next 25 sts, K4, dec 8 sts evenly across next 25

Viking Odin

Vest

1307-24

Size: 2 – 4 – 6 – 8 – 10 – 12/14 yrs

Chest: 60 – 65 – 71 – 78 – 82 – 88 cm

23.6-25.6-28-30.7-32.3-34.6 in

Length: 36 – 40 – 45 – 50 – 54 – 58 cm

14.2-15.7-17.7-19.7-21.3-22.8 in

Sleeve length: 10 – 10 – 10 – 10 – 10 – 10 cm

4-4-4-4-4-4 in

ALTERNATIVE YARN: Viking Odin (100% wool, superwash), 100 g ball, Viking Eco Alpaca (100 % alpaca), 100 g skein, Viking Kid Mohair (70% kid mohair-18% merino wool-12% nylon), 50 g ball

Multiclr, 827 : 3 – 4 – 4 – 5 – 5 – 6 balls

Circular needle and double pointed needles size 5 and 5½ mm – US 8 and 9 – UK/Canadian 6 and 5

Gauge: 18 sts = approx. 10 cm/4 in over St st using needles size 5½ mm. **Check your gauge to ensure success.**

BACK

Using needles size 5 mm, cast on 54 – 60 – 64 – 70 – 74 – 80 sts. Work back and forth 6 cm/2.4 in in K2,P2 rib. Change to needles size 5½ mm. Inc for cable patt on next row (= WS): Work St st over 7 – 9 – 10 – 12 – 14 – 16 sts, inc 6 sts over next 16 sts = patt A (22 sts), Seed st over 8 – 10 – 12 – 14 – 14 – 16 sts, inc 6 sts over next 16 sts = patt A (22 sts), and end with St st over 7 – 9 – 10 – 12 – 14 – 16 sts. Cont working back and forth as established until work measures approx. 36 – 40 – 45 – 50 – 54 – 58 cm/14.2-15.7-17.7-19.7-21.3-22.8 in. Knit 1 row over all sts, and dec 6 sts over both patt A.

FRONT

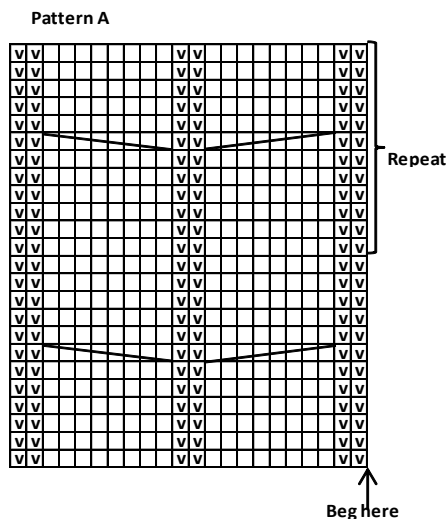
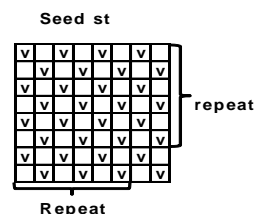
Work same as for back. When work measures approx. 32 – 35 – 40 – 45 – 49 – 52 cm/12.6-13.8-15.7-17.7-19.3-20.5 in, sl 8 – 10 – 12 – 14 – 14 – 16 mid sts on holder. Finish each side separately. Bind off at neck edge every 2nd row 1x5 – 6 – 6 – 6 – 6 – 6 sts, 1x3 sts, 0 – 1 – 1 – 1 – 1 – 1x2 sts and 2 – 1 – 1 – 1 – 1 – 1x1 st. When front measures same as back, knit 1 row over all sts, and dec over patt A so that 16 – 16 – 19 – 20 – 23 – 25 sts rem for shoulder.

Work same for the other side, rev all shaping.

Sleeves: Using needles size 5 mm, cast on 52 – 56 – 60 – 64 – 68 – 72 sts. Work in K2,P2 rib until sleeve measures approx. 10 cm/4 in. Bind off in rib.

Collar : Beg from left shoulder, using needles size 5 mm, pick or knit up approx. 64-68-72-76-80-84 sts. Work in rnds approx. 20 cm/7.9 in in K2,P2 rib. Bind off in rib.

Finishing: Sew side seams, leaving approx. 14 – 15 – 16 – 17 – 18 – 20 cm/5.5-5.9-6.3-6.7-7.1-7.9 in openings for armholes. Sew on sleeves. Note! Take care not to stretch purl-sts when sewing on sleeves.



□ = Knit on RS, purl on WS

v = rl on RS, knit on WS

= Sl 4 sts on cn and hold to back, K4, knit sts from cn

= Sl 4 sts on cn and hold to front, K4, knit sts from cn

Viking Odin

Cardigan

1307-25

Size: 2 – 4 – 6 – 8 – 10 – 12/14 yrs

Chest: 60 – 65 – 71 – 75 – 81 – 88 cm

23.6-25.6-28-29.5-31.9-34.6 in

Length: 38 – 42 – 48 – 54 – 58 – 62 cm

15-16.5-18.9-21.3-22.8-24.4 in

Sleeve length: 28 – 31 – 34 – 38 – 42 – 46 cm

11-12.2-13.4-15-16.5-18.1 in

ALTERNATIVE YARN: Viking Odin (100% wool, superwash), 100 g ball, Viking Eco Alpaca (100 % alpaca), 100 g skein, Viking Kid Mohair (70% kid mohair-18% merino wool-12% nylon), 50 g ball

Grey, 815 : 3 – 4 – 4 – 5 – 5 – 6 balls

Circular needles and double pointed needles size 5 and 5½ mm
– US 8 and 9 – UK/Canadian 6 and 5
+ 3 pairs of leather clasps

Gauge: 18 sts = approx. 10 cm/4 in over St st using needles size 5½ mm. **Check your gauge to ensure success.**

Using needles size 5 mm, cast on 102 – 110 – 122 – 126 – 138 – 150 sts. Work back and forth approx. 2 – 2 – 3 – 3 – 4 – 4 cm/0.8-0.8-1.2-1.2-1.6-1.6 in in K2,P2 rib. Change to needles size 5½ mm. Cont working in patt A, and inc on 1st row number of sts to be 104 – 110 – 122 – 128 – 140 – 152 sts. Place markers each side, 24 – 26 – 29 – 30 – 33 – 36 sts for both fronts, and 56 – 58 – 64 – 68 – 74 – 80 sts for back. When work measures approx. 21 – 24 – 28 – 33 – 36 – 37 cm/8.3-9.4-11-13-14.2-14.6 in, beg dec for V-neck: Dec 1 st at each edge inside selvage st approx. every 2 – 1½ – 2 – 2 – 2½ cm/0.8-0.6-0.8-0.8-0.8-1 in. When work measures approx. 24 – 27 – 32 – 37 – 40 – 42 cm/9.4-10.6-12.6-14.6-15.7-16.5 in, divide work at sides for armholes. Finish back and fronts separately.

Back: Cont working in patt A until work measures approx. 38 – 42 – 48 – 54 – 58 – 62 cm/15-16.5-18.9-21.3-22.8-24.4 in. Bind off.

Left front: Cont working in patt A, and cont dec for V-neck until 16 – 16 – 19 – 20 – 23 – 26 sts rem for shoulder. Bind off when front measures same as back.

Right front: Work same as left front.

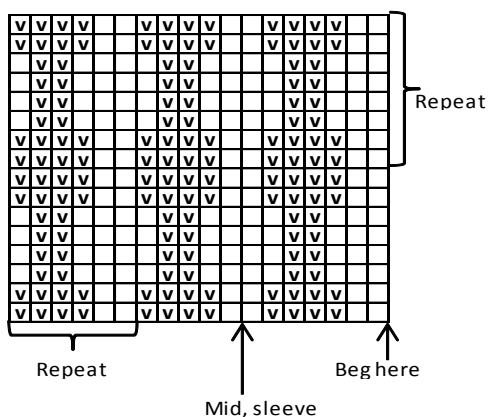
Sleeves: Using needles size 5 mm, cast on 32 – 32 – 32 – 36 – 36 – 40 sts. Work in rnds approx. 4 – 4 – 4 – 5 – 5 – 5 cm/1.6-1.6-1.6-2-2-2 in in K2,P2 rib. Change to needles size 5 ½ mm. Cont working in patt A, and inc on 1st rnd number of sts to be 32 – 34 – 36 – 38 – 40 – 40 sts. Place a marker beg of rnd (= mid under sleeve). Inc 1 st both sides of the marker approx. every 2 ½ – 3 – 3 – 3 – 2 ½ cm/1-1.2-1.2-1.2-1.2-1 in until there is 50 – 52 – 56 – 60 – 64 – 72 sts on a rnd, and sleeve measures approx. 28 – 31 – 34 – 38 – 42 – 46 cm/11-13-13.4-15-16.5-18.1 in. Bind off.

Finishing: Join shoulder seams.

Front bands: Beg from lower edge of right front. Using needles size 5 mm, knit or pick up approx. 72 – 80 – 90 – 102 – 110 – 116 sts along right front edge, 24 – 26 – 26 – 28 – 28 – 28 sts from back, and approx. 72 – 80 – 90 – 102 – 110 – 116 sts along left front edge. Work approx. 4 cm/1.6 in in K2,P2 rib. Bind off in rib.

Sew on sleeves.

Pattern A



□ = Knit on RS, purl on WS

▣ = Purl on RS, knit on WS