

Viking Alpaca Silk

Sweater

1011-1

Viking **ALPACA SILK**, (50% alpaca, 50% silk), 50 g ball
Alternative yarn: Viking **BJØRK**, (90% cotton, 10% superwash wool), 50 g ball

Size	S	M	L	
Bust	90	99	107	cm
	35.4	39	42.1	in
Length	67	68	70	cm
	26.4	26.8	27.6	in
Sleeve length	48	50	50	cm
	18.9	19.7	19.7	in

Materials

Grey, 415	10	10	11	balls
Green, 431	1	1	1	ball
Light Violet, 467	1	1	1	ball
Pink, 465	1	1	1	ball

Double pointed needles and circular needle size 2½ and 3 mm – US 1 or 2 and 2 or 3 – UK/Canadian 13 or 12 and 11.

Gauge: 25 sts = 10 cm/4 in over St st, using needles size 3½ mm. Check your gauge to ensure success.

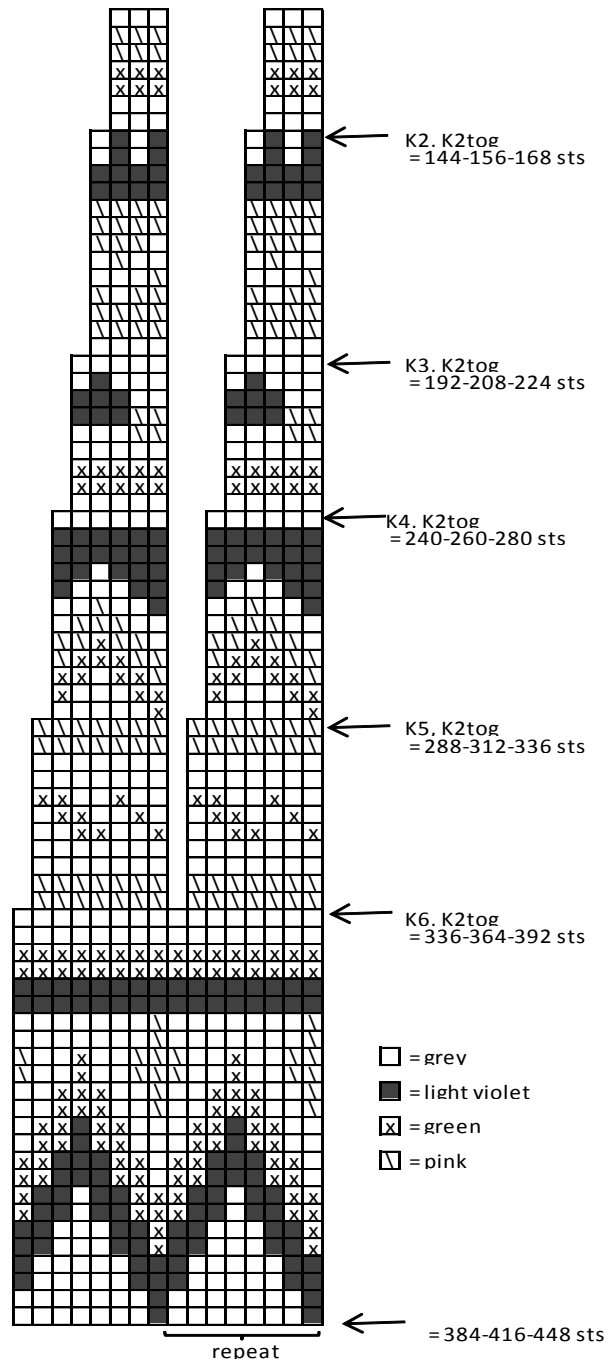
SWEATER

Using needles size 2½ mm and grey yarn, cast on 224-248-268 sts. Work in rnds 6-7-8 cm/2.4-2.8-3.1 in, in K1,P1 rib. Change to needles size 3 mm, and cont working in St st until work measures approx. 40-41-42 cm/15.7-16.1-16.5 in. Place markers on both sides, 113-125-135 sts for front, and 111-123-133 sts for back. Bind off at each side 16 sts (8 sts on both sides of the markers). Put the piece aside, and knit sleeves.

Sleeves: Using dpn size 2½ mm and grey yarn, cast on 48-52-52 sts. Work in rnds 6-7-8 cm/2.4-2.8-3.1 in, in K1,P1 rib. Change to needles size 3 mm. K 1 rnd and adjust the number of sts evenly across the rnd to be 73-75-77 sts. Place a marker mid under arm. Cont working in St st, and inc 1 st on both side of the marker approx. every 2 cm/0.8 in (same for all sizes) until you have 115-119-123 sts on a rnd. When work measures approx. 48-50-50 cm/18.9-19.7-19.7 in (or desired length), bind off 16 sts mid under arm (8 sts on both side of the marker). Set the piece aside, and work same for the other sleeve.

Yoke: Slip sleeves in (= where the sts were bound-off for armholes) on the same circular needle with body piece = 390-422-450 sts. Beg from back, K 1 rnd, adjusting the number of sts evenly across the rnd to be 384-416-448 sts. Work 0-4-4 rnds in St st. Cont working in rnds in patt and dec as charted = 144-156-168 sts rem. K 1 rnd, adjusting the number of sts evenly across the rnd to be 132-138-144 sts. Work 20 cm/7.9 in, in K1,P1 and grey yarn. Bind off in rib. Fold neck border on RS. Weave in ends on WS.

Sew underarm seams.



- = grey
- = light violet
- ⊗ = green
- ▽ = pink

← = 384-416-448 sts

Viking Alpaca Silk

Tunic

1011-2

Viking **ALPACA SILK** (50% alpaca, 50% silk), 50 g ball
Alternative yarn: Viking **BJØRK** (90% cotton, 10% merino wool), 50 g ball

Size	2/4	6	8	10	yrs
Chest	63	68	73	78	cm
	24.8	26.8	28.7	30.7	in
Length	45	50	55	60	cm
	17.7	19.7	21.7	23.6	in
Sleeve length	30	34	38	42	cm
	11.8	13.4	15	16.5	in

Materials

Marine, 426	5	6	6	7	balls
Red, 450	1	1	1	1	ball
White, 400	1	1	1	2	balls

Circular needle and double pointed needles size 3 mm – US 2 or 3 - UK/Canadian 11

Gauge: 25 sts = approx. 10 cm/4 in, over St st using needles size 3 mm. Check your gauge to ensure success.

TUNIC

Using needles size 3 mm and blue clr, cast on 234-252-270-288 sts. Work in rnds as foll: *K 2 rnds, P 2 rnds* with stripes: rep *-* twice with blue, rep *-* with red yarn and rep *-* once with white yarn. Place markers each side, 117-126-135-144 sts for both back and front. Change to marine clr, K 1 rnd and cont working in K4,P2 rib. Dec 1 st every 11th-13th-16th-18th rnd each 3rd k-stripe, until 156-168-180-192 sts rem on a rnd. (*1st dec: dec 1 st in 1st k-stripe, 2 k-stripes without dec, rep across the rnd. 2nd dec: 1 k-stripe without dec, dec 1 st in next k-stripe, 1 k-stripe without dec, rep across the rnd. 3rd dec: 2 k-stripes without dec, dec 1 st in next k-stripe, rep across the rnd*. Rep * - * 1 more time). Cont working in K2,P2 rib. When work measures approx. 25-29-33-37 cm, work an eyelet rnd: *K2tog, 1 yo*, rep *-* across the rnd. Cont working in St st and inc evenly across 1st rnd 2-2-2-2 sts (=158-170-182-194 sts). Place new markers both sides, 79-85-91-97 sts for back and front. When work measures approx. 30-34-38-42 cm/11.8-13.4-15-16.5 in, bind off 12 sts each side (= 6 sts both sides of the markers). Finish back and front separately.

Back

Cont working back and forth in St st and marine clr for approx. 0-0-1-2 cm/0-0-0.4-0.8 in. Cont working in patt II as charted. Same time, bind off at each edge every 2nd row 1x3, 1x2 and 1x1 sts. After completing patt II, cont working in marine clr until work measures approx. 45-50-55-60 cm/17.7-19.7-21.7-23.6 in, and armhole measures approx. 15-16-17-18 cm/5.9-6.3-6.7-7.1 in. Bind off.

Front

Work and bind off for armhole same as for back. When work measures approx. 40-45-50-55 cm/15.7-17.7-19.7-21.7 in, bind off mid 17-19-23-25 sts for neck edge. Bind off at neck edge ever 2nd row 1x3, 1x2 and 1x1 sts. When work measures the same as back, bind off sts.

Work same for the other side, rev all shaping.

Sleeves

Using needles size 3 mm and marine clr, cast on 36-36-42-42 sts. Place marker beg of rnd (= mid under arm). Work in rnds, in K4,P2 rib. Inc 1 st both sides of the marker every 5th rnd (same for all sizes) altog 20-22-22-24 times (=76-80-86-90 sts on a rnd). Inc sts are worked in rib. When work measures

approx. 30-34-38-42 cm/11.8-13.4-15-16.5 in, or desired length, bind off 12 sts mid under arm (=6 sts both sides of the markers). Cont working back and forth. Bind off at each edge every 2nd row 1x3, 1x2 and 1x1 sts. Bind off rem sts.

Work same for the other sleeve.

Finishing

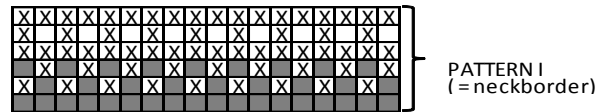
Sew shoulder seams.

Neck border

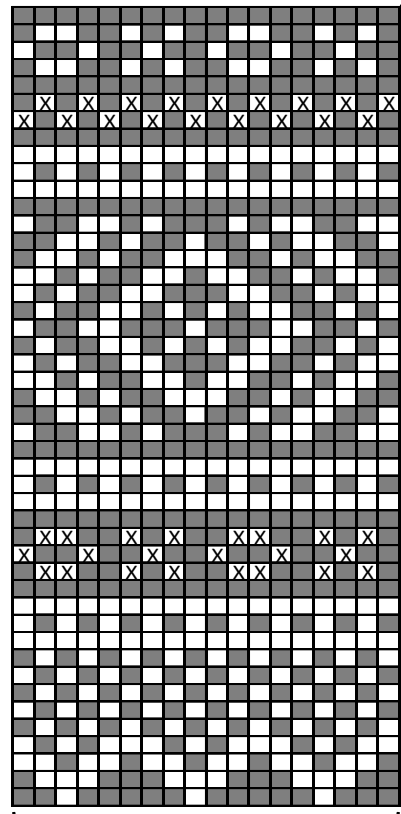
Beg mid back, pick or knit up with marine clr 80-84-88-92 sts. Work in patt I as charted. Cont working in red until neck border measures approx. 2-2-3-3 cm/0.8-0.8-1.2-1.2 in. P 1 rnd (= folding edge). Work in rnds approx. 2-2-3-3 cm/0.8-0.8-1.2-1.2 in, in St st, and bind off rather loosely. Fold neck border in double, and sew on WS.

Twist approx. 150 cm/59 in long cord using 3 lengths of red yarn, and thread it through eyelet rnd. Make 2 pompons (Ø approx. 5-5-6-6 cm/2-2-2.4-2.4 in), using all 3 clrs. Fasten 1 pompon to each end of the cord.

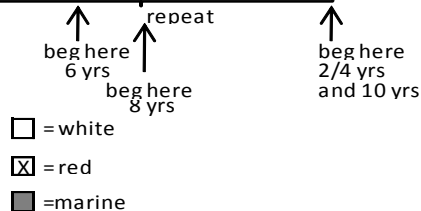
Sew on sleeves. Weave in all ends on WS.



PATTERN I
(= neckborder)



PATTERN II



Viking Alpaca Silk

Dog's sweater

1011-3

Viking **ALPACA SILK** (50% alpaca, 50% silk), 50 g ball
Alternative yarn: Viking **BJØRK** (90% cotton, 10% merino wool), 50 g ball

Size	S	M	L	XL	
Chest	37	43	50	58	cm
	14.6	17.3	19.7	22.8	in
Length of back	24	27	32	36	cm
	9.4	10.6	12.6	14.2	in
Neck	24	28	33	37	cm
	9.4	11	13	14.6	in
Weight, approx.	2,8	4,5	6	10	kg

Materials

Marine, 426	1	2	2	3	balls
White, 400	1	1	2	2	balls
Red, 450	1	1	1	1	ball

Take the following measures from your own dog:
 Note! Choose the size according to the closest chest measurement



Short circular needle and double pointed needles size 3 mm – US 2 or 3 - UK/Canadian 11

Gauge: 25 sts = approx. 10 cm/4 in over St st using needles size 3 mm. Check your gauge to ensure success.

SWEATER

Beg from neck, and work downwards. Using needles size 3 mm and red clr, cast on 60-70-82-92 sts. Work in rnds approx. 6-8-10-12 cm/2.4-3.1-4-4.7 in (or desired length), in K1,P1 rib (= neck border). K 1 rnd, adjusting the number of sts evenly across the rnd to be 90-108-126-144 sts. Cont working in rnds in patt as charted. When work measures approx. 14-18-22-26 cm/5.5-7.1-8.7-10.2 in (measured from cast-on edge), divide the work for front legs as foll: Beg from beg of rnd and bind off 1 st (clr changing will show least when it takes place here), slip 15-25-35-45 sts on holder/thread (= chest), bind off 1 st. Cont working back and forth in patt over rem 75-83-91-99 sts (=back). When work measures approx. 18-22-30-34 cm/7.1-8.7-11.8-13.4 in and opening measures approx. 4-4-6-8 cm/1.6-1.6-2.4-3.1in, slip sts on holder/thread. Slip sts for chest on needles size 3 mm, and cont working back and forth in patt until work measures same as back. Slip all sts on same needle, and cast on 1 st at each edge, between back and chest pieces (=90-108-126-144 sts). Cont working in rnds in patt. When patt is completed, cont working in marine clr until the end. When work measures approx. 20-25-32-38 cm/7.9-9.8-12.6-15 in, bind off 17-27-37-47 sts mid under belly. Cont working back and forth, and bind off at each edge every 2nd row 2-2-3-3x2 sts, 5-5-6-6x1 st, 3-4-4-5x2 sts, 2-2-2-2x3 sts, 1-1-1-1x4 sts (=23-27-29-33 sts). Work measures now approx. 30-35-42-48 cm/11.8-13.8-16.5-18.9 in.

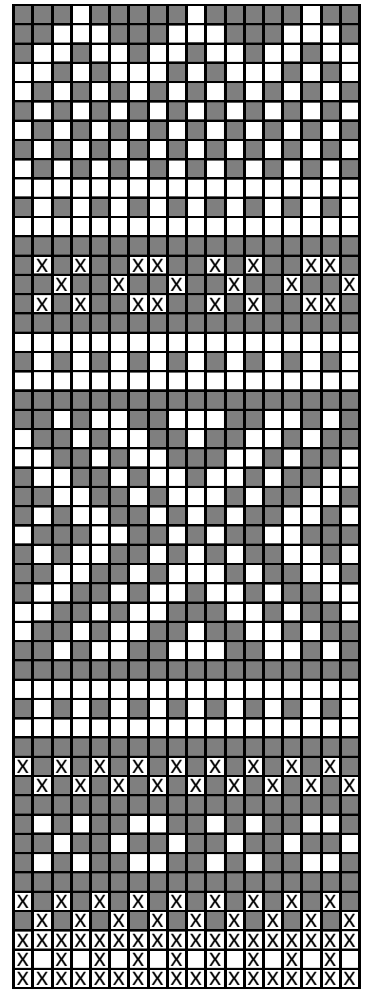
Border round bound-off edge

Slip rem sts on a short circular needle size 3 mm, knit or pick up sts along bound-off sts, using marine clr, altog approx. 110-140-170-200 sts. Work in rnds approx. 3-3-4-4 cm/1.2-1.2-1.6-1.6 in, in K2,P2 rib. Bind off.

Leg

Beg from inner seam of the opening for the front leg, using red clr pick or knit up 38-50-58-70 sts. Work in rnds approx. 2-3-3-4 cm/0.8-1.2-1.2-1.6 in (or desired length) in K2,P2 rib. Bind off.

Weave in all ends on WS.



- = white
- ⊗ = red
- = marine

Dog in the photo is 4 months old Chinese Crested puppy, Fabian. He is wearing a sweater size S.

Viking Alpaca Silk

Sweater

1011-4

Viking **ALPACA SILK** (50%, alpaca, 50% silk), 50 g ball
Alternative yarn: Viking **BJØRK** (90% cotton, 10% merino wool), 50 g ball

Size	S	M	L	XL	
Bust	80	86	94	101	cm
	31.5	33.9	37	39.8	in
Length	63	63	63	63	cm
	24.8	24.8	24.8	24.8	in
Sleeve length	12	12	12	12	cm
	4.7	4.7	4.7	4.7	in

Materials

Marine, 426	3	4	4	5	balls
Red, 450	3	3	4	4	balls
White, 400	2	2	3	3	balls

Circular needle and double pointed needles size 3 mm – US 2 or 3 - UK/Canadian 11

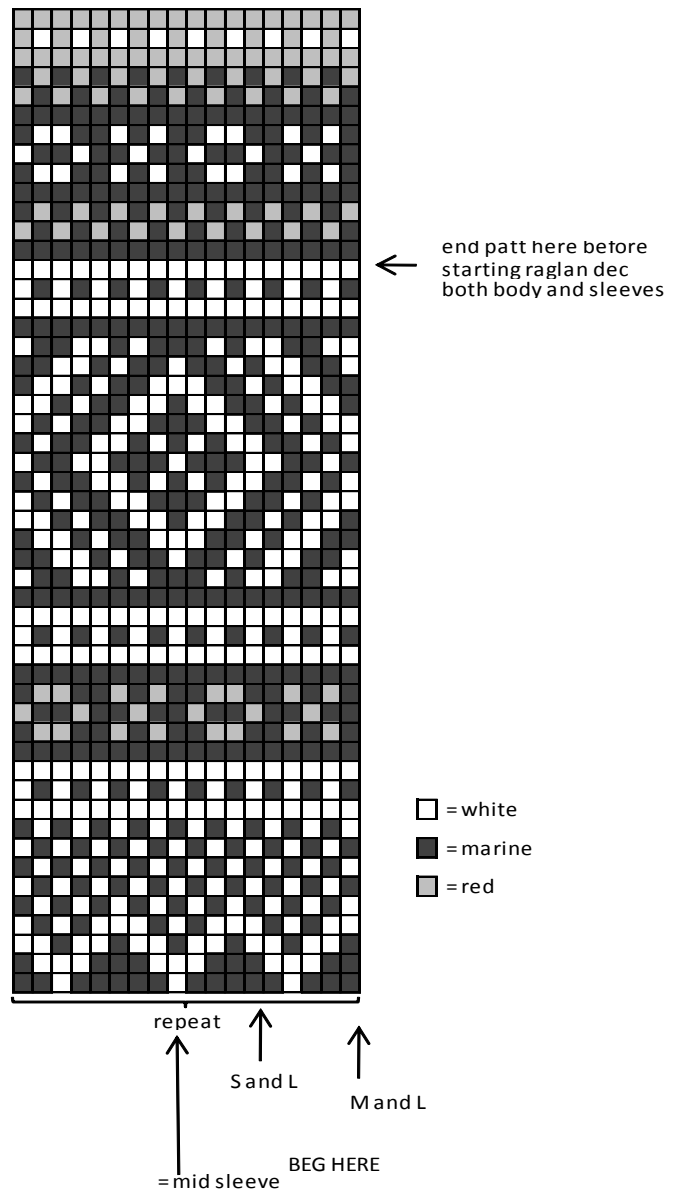
Gauge: 25 sts = approx. 10 cm/4 in, over St st using needles size 3 mm. Check your gauge to ensure success.

Using needles size 2½ mm and marineblue clr, cast on 198-216-234-252 sts. Work in rnds approx. 3-3-3-3 cm/1.2-1.2-1.2-1.2 in, in K1,P1 rib. Change to needles size 3 mm, and K 1 rnd. Place markers each side, 99-109-117-127 sts for front, and 99-107-117-125 sts for back. Cont working in rnds, in patt as charted. When patt is ready, work 8 rnds in St st and marineblue clr, and then 20 rnds in St st and red clr. Rep patt 1 more time (arrow points out where to end). Work measures now approx. 40 cm/15.7 in. Bind off 10 sts each side (5 sts both sides of the markers). Put work aside, and knit the sleeves.

Sleeves

Using needles size 2½ mm and marineblue clr, cast on 80-84-88-90 sts. Work in rnds 3-3-3-3 cm/1.2-1.2-1.2-1.2 in, in K1,P1 rib. Change to needles size 3 mm. K 1 rnd, adjusting the number of sts evenly across the rnd to be 87-91-95-97 sts. Place marker mid under arm. Work in patt as charted, check from mid st where to beg patt. Arrow points out where to end patt (same as body). Bind off 10 sts mid under arm (5 sts both sides of the marker). Work same for the other sleeve.

Yoke: Slip sts in (= where the sts were bound-off for sleeves) on same circular needle as body piece = 332-358-384-406 sts on a rnd. Place 4 markers, 1 at each seam line. Complete the charted patt, and dec at raglan-seams as foll: work until 3 sts rem before marker, K2togtbl, K2, K2tog. Rep dec every 2nd rnd. Work after patt 8 rnds in St st and marineblue clr. Continue working in red yarn for approx. 10-10-11-12 cm/4-4-4-3.4-3.7 in. Change to white and work 4 rnds. Change to red, K 1 rnd, cont working in K1,P1 rib (Note! Keep cont raglan-dec). When neck border measures approx. 4 cm/1.6 in, and 116-126-128-134 sts rem on a rnd, cont working without dec until neck border measures approx. 7-7-8-8 cm/2.8-2.8-3.1-3.1 in. Bind off.



Viking Alpaca Silk

Bolero

1011-5

Viking **ALPACA SILK** (50% alpaca, 50% silk), 50 g ball
Alternative yarn: Viking **BJØRK** (90% cotton, 10% merino wool), 50 g ball

Size	S	M	L	
Bust	85	90	95	cm
	33.5	35.4	37.4	in
Length	43	45	46	cm
	16.9	17.7	18.1	in
Sleeve length	26	27	28	cm
	10.2	10.6	11	in
Materials				
Brown, 418	5	6	7	balls

Pair of knitting needles size 3 mm – US 2 or 3 - UK/Canadian 11

Crochet hook size 3 mm – US C/2 or D/3 - UK/Canadian 11

Gauge: 25 sts = approx. 10 cm/4 in over St st using needles size 3 mm. Check your tension to ensure success.

Pattern (divisible 6 + 1 sts)

1st and 3rd row: K2, *P3, K3*, rep *-* across the row, end with P3, K2.

2nd row: P2, *K3, P3*, rep *-* across the row, end with K3, P2.

4th row: K2, *yo, sl1, K2tog, pssso, yo, K3*, rep *-*, across the row, end with K2.

5th and 7th row: Rep 2nd row.

6th row: K2, *P3, K3*, rep *-* across the row, end with P3, K2.

8th row: K2tog, *yo, K3, yo, sl1, K2tog, pssso*, rep *-* across the row, end with yo, K3, yo, sl next 2 sts on RH needle and K them tog.

Rep 1st-8th row.

Back

Using needles size 3 mm, cast on 99-105-111 sts. Work back and forth inside selvage sts (= K 1st and last st every row) in patt. When work measures approx. 23 cm/9.1 in, bind off at each edge, every 2nd row 1x3-3-4 sts, 1x3 sts, 1-1-2x2 sts and 2-3-3x1 st = 77-81-83 sts rem. Cont working back and forth, until work measures approx. 20-21-22 cm/7.9-8.3-8.7 in. Bind off.

Left front

Using needles size 3 mm, cast on 33 sts (same for all sizes). Work back and forth inside selvage sts in patt. After 2 rows, inc 1 st inside selvage st at front edge every 2nd row until you have 48-51-54 sts on a row. When work measures approx. 12-13-14 cm/4.7-5.1-5.1 in, bind off at neck edge as foll: work until 3 sts rem, K2tog, K1 (= selvage st). Cont dec 1 st every 2nd row altog 10-11-11 times, and then every 4th row 11-12-12 times. Bind off for armhole same as for back. When V-neck dec are completed, 15-15-16 sts rem for shoulder. When work measures the same as back, bind off.

Right front

Work same as for left front, rev all shaping. V-neck dec: K2togtbl.

Sleeves (worked in St st)

Using needles size 3 mm, cast on 58-58-62 sts. Work 6 rnds in St st. Place marker mid under arm. Inc 1 st both sides of the marker approx. every 1½ cm/0.6 in, until you have 86-90-94 sts on a rnd. When work measures approx. 26 cm/10.2 in, bind

off for arm top as foll: Bind off 6-6-8 m mid under arm. Cont working back and forth. Bind off at each edge every 2nd row 1x3-3-4 sts, 1x3 sts, 1-1-2x2 sts and 2-3-3x1 st, and then every 4th row 9-10-11x1 st. Cont working without dec until work measures approx. 20 cm/7.9in from the first sleeve top dec. Bind off at each edge every 2nd row 3x1 st, 1x2 sts and 1x3 sts. Bind off rem sts.

Work same for the other sleeve.

Finishing: Sew shoulder and side seams.

Border round fronts, back and sleeves: Using crochet hook size 3 mm, work 2 rnds sc along the edges, (Take care that the edge doesn't turn out too tight or too loose).

If you wish, you can also work a picot-edge: *Ch4, 1 sl st to first ch, skip 1 st, insert hook to next st*, rep *-* across the rnd.

'Belt': Pick or knit up 14 sts along right front edge down from the first dec for V-neck. Work 3 cm back and forth in K1,P1. Bind off. Use 2 D-shaped belt buckles, and sew the knitted pieces on WS around the buckles.

Left front: Pick or knit up sts same as for right front. Work 8 cm in K1,P1. Bind off 1 st at each edge every 2nd row until 2 sts rem. Break yarn, and thread through rem sts. Set in sleeves. Weave in all ends on WS.

Viking Alpaca Silk

Cropped cardigan

1011-6

Viking **ALPACA SILK** (50% alpaca, 50% silk), 50 g ball
Alternative yarn: Viking **BJØRK** (90% cotton, 10% merino wool)

Size	S	M	L	
Bust	90	95	100	cm
	35.4	37.4	39.4	in
Length	50	52	54	cm
	19.7	20.5	21.3	in
Sleeve length	59	60	61	cm
	23.2	23.6	24	in

Materials

Mustard yellow, 13 14 15 balls
 445

Circular needle and double pointed needles size 3 mm – US 2 or 3 – UK/Canadian 11
 7 buttons

Gauge: 25 sts = approx. 10 cm/4 in over St st using needles size 3 mm. Check your gauge to ensure success.

CARDIGAN

Using needles size 3 mm, cast on 292-306-320 sts. Work back and forth approx. 15-16-17 cm/5.9-6.3-6.7 in, in K2,P2 rib. Place markers each side, 150-158-164 sts for back and 71-74-78 sts for both fronts. Cont working back and forth in patt as charted (beg and end as shown on the chart) .**Note!** Chart only shows every 2nd row. Rem rows: K over k-sts, P over p-sts. When work measures approx. 29-30-31 cm/11.4-11.8-12.2 in., bind off for armhole 14 sts both sides (7 sts both sides of each marker). Finish back and front separately .

Back

Cont working back and forth in patt. Bind off at each edge every 2nd 1x3, 1x2 and 1x1 sts (extra sts on the sides, not forming a complete motif will be worked in St st). When work measures approx. 50-52-54 cm/19.7-20.5-21.3 in, and armhole measures approx. 21-22-23 cm/8.3-8.7-9.1in, bind off sts.

Right front

Work and bind off same as for back. When work measures approx. 45-47-49 cm/17.7-18.5-19.3 in, bind off 22-22-22 sts for neck edge.

Bind off at neck edge every 2nd row 1x3, 1x2 and 1x1 sts (extra sts, not forming a complete motif will be worked in St st).

When work measures same as back, bind off sts. Work same for left front, rev all shaping.

Ermer

Using needles size 3 mm, cast on 48-52-52 sts. Place marker beg of rnd (=mid under arm) and work in rnds in K2,P2 rib. When work measures approx. 16-18-20 cm/6.3-7.1-7.9 in, K 1 rnd, adjusting (= each st: K1, 1 yo, K1) the number of sts across the rnd to be 138-152-152 sts. Sizes M and L: Work 1st and last st without inc. K 1 rnd. Cont working in rnds in patt as charted (beg and end same as for body). When work measures approx. 59-60-61 cm/23.2-23.6-24 in, bind off mid 14 sts under arm (7 sts both sides of the marker). Cont working back and forth. Bind off at each edge very 2nd row 1x3, 1x2 and 1x1 sts (same for all sizes). Bind off sts.

Work same for the other sleeve.

Finishing

Sew shoulder seams.

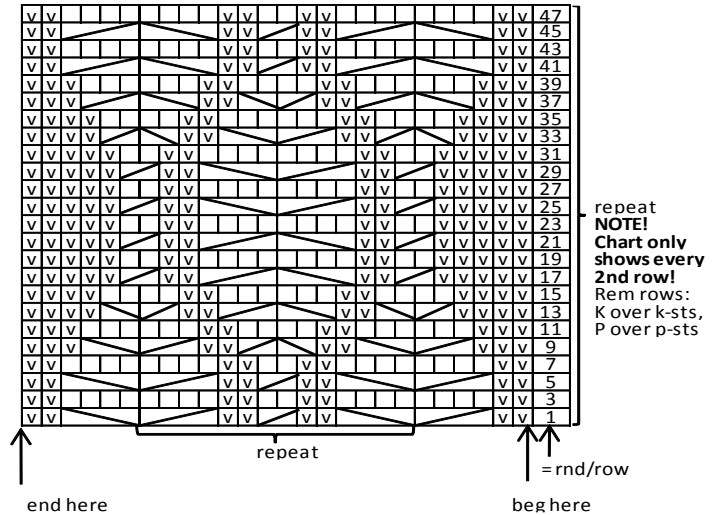
Neck border: Beg from right front. Using needles size 3 mm, pick or knit up approx. 142-146-150-154 sts. Work approx. 3-4-4 cm/1.2-1.6-1.6 in, in K2,P2 rib. Bind off rather loosely.

Left front border: Using needles size 3 mm, pick or knit up approx. 158-162-166 sts. Work back and forth approx. 3-4-4 cm/1.2-1.6-1.6 in, in K2,P2 rib. Bind off. Place markers for 7 buttons, one approx. 1 cm/0.4 in from lower edge, one approx. 1 cm/0.4 in from neck edge, rem evenly spaced apart.

Work same for right front border, but with 7 buttonholes.

Buttonhole: Bind off 2 sts. Next row: Cast on 2 sts over the bound-off sts.

Set in sleeves (adjust on shoulder top if needed). Weave in all ends on WS.



- = K on RS, P on WS
- ▣ = P on RS, K on WS
- ▤ = SL1 on cn, hold to back, K1, K1 from cn
- ▥ = SL1 on cn, hold to front, K1, K1 from cn
- ▦ = SL1 on cn, hold to back, K2, K1 from cn
- ▧ = SL2 on cn, hold to front, K1, K2 from cn
- ▨ = SL2 on cn, hold to back, K2, K2 from cn
- ▩ = SL2 on cn, hold to front, K2, K2 from cn

Viking Alpaca Silk

Shoulderwarmer

1011-7

Viking **ALPACA SILK** (50% alpaca, 50% silk), 50 g ball
Alternative yarn: Viking **BJØRK** (90% cotton, 10% merino wool), 50 g ball

Size:

Woman

Materials:

Blue, 425

8 balls

Pair of knitting needles and circular needle size 5 mm – US 8 – UK/Canadian 6

Gauge, with double yarn: 14 sts = approx. 10 cm/4 in over St st using needles size 5 mm. Check your gauge to ensure success.

Seed st:

1st row: *K1, P1*

2nd row: K all p-sts, P all k-sts

Rep 2nd row.

Beg from the sleeve: Using needles size 5 mm and double yarn, cast on 29 sts. Work back and forth 20

cm/7.9 in, in Seed st. Cont as foll: Beg from RS, 5 sts in Seed st, 6 sts in St st, 7 sts in Seed st, 6 sts in St st, 5 sts in Seed st. Cont working back and forth. Inc 1 st every 6th row at each edge inside 5 Seed sts until you have 61 sts on a row. Cont working without inc until work measures approx. 65 cm/25.6 in. Bind off 7 mid sts for neck edge. Work back and front separately. Bind off 1 st at neck edge every 2nd row 5 times. Cont working without dec until neck edge measures approx. 20 cm/7.9 in. Inc 1 st at neck edge every 2nd row 5 times. Slip sts on holder, and work same for the other side, rev all shaping. Slip all sts on same needle, and cast on 7 sts in the middle (= worked in Seed st). Work same as for the other sleeve, but dec inside 5 Seed sts on the sides. End with 20 cm/7.9 in, in Seed st. Bind off.

Neck border: Using needles size 5 mm and double yarn, pick and knit up approx. 100 sts round neck edge. Work in rnds in Seed st. When work measures approx. 16 cm/6.3 in, bind off.

Viking Alpaca Silk

Poncho

1011-8

Viking ALPACA SILK (50% alpaca, 50% silk), 50 g ball

Alternative yarn: Viking BJØRK (90% cotton, 10% merino wool)

Size: Girl

Materials

Red, 450	3 balls
White, 402	2 balls
Brown, 418	2 balls

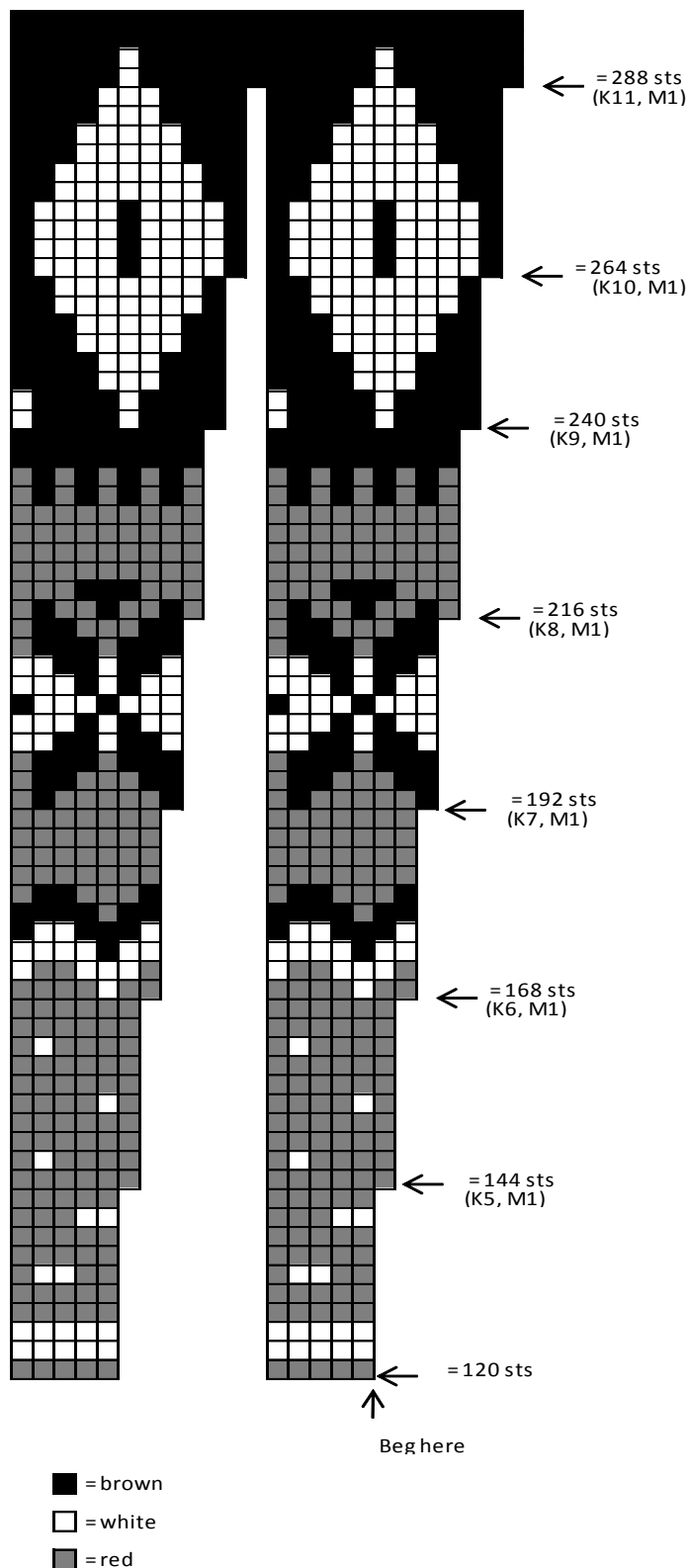
Short and long circular needle size 3 mm – US 2 or 3 – UK/Canadian 11

Gauge: 25 sts = approx. 10 cm/4 in over St st using needles size 3 mm. Check your gauge to ensure success.

PONCHO (Beg from neck edge)

Using needles size 3 mm and red yarn, cast on 120 sts. Work back and forth 6 cm/2.4 in, in K1,P1 rib (border will be folded in double) = neck border with spilt. Place the beg of rnd on one shoulder. Slip first 30 sts on RH needle, and cont working in rnds in patt as charted (split = midt front). Inc as charted. When patt is ready, cont inc every 20th rnd same as before 3 more times = 360 sts. Same time, work in stripes: * 2 rnds in red, 2 rnds in brown*, rep *-* 4 times more. Work 8 rnds in red, 2 rnds in white, 2 rnds in red, 2 rnds in white, 2 rnds in red, 12 rnds in white, 2 rnds in red, 2 rnds in white, 12 rnds in brown, 2 rnds in white. Cont working in St st and red clr, until work measures approx. 45 cm/17.7 in (measured from neck edge). Bind off. Using red yarn, tie approx. 10 cm/4 in long fringes along the lower edge (easiest worked with a crochet hook).

Twist a cord, using red yarn, and thread through neck border. Using white yarn, make 2 pompons and fasten to each end of the cord.



Viking Alpaca Silk

Hat

1011-9

Viking **ALPACA SILK** (50% alpaca, 50% silk), 50 g ball
Alternative yarn: Viking **BJØRK** (90% cotton, 10% merino wool)

Size	2/4	6/10	12/14	yrs
Circumference	43	48	52	cm
	16.9	18.9	20.5	in

Materials

Violet, 468	1	1	1	ball
Red, 450	1	1	1	ball
Grey, 413	1	1	1	ball

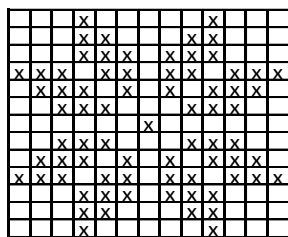
Circular needle and double pointed needles size 3 mm – US 2 or 3 – UK/Canadian 11

Gauge: 25 sts = approx. 10 cm/4 in over St st using needles size 3 mm.

Using needles size 3 mm and violet yarn, cast on 108-116-124 sts. Work in rnds 3 cm/1.2 in, in K1,P1 rib. Divide work to two pieces, 40 sts for one piece and 68-76-84 sts for the other piece. Cont working in violet yarn over 40 sts until work measures approx. 17-19-21 cm/6.7-7.5-8.3 in. Dec for crown: *K2, K2tog*, rep *-* across the row. Work 3 rows without dec. Rep dec once again, with K1 between dec. Work 3 rows without dec. Next row: K all sts tog in pairs = 10 sts rem. Break yarn, and thread through rem sts.

Slip 68-76-84 sts over needles size 3 mm. Cont working back and forth with stripes as foll: *2 rows in light grey, 2 rows in red*, rep *-* until work measures approx. 17-19-21 cm/6.7-7.5-8.3 in. Dec for crown same as for the other piece = 17-19-21 sts rem. Break yarn, and thread through rem sts. Pull tightly, and weave in ends on WS. Sew pieces tog.

Embroider (Swiss darning) an eight-pedal rose using violet yarn (see photo).



STAR MOTIF EMBROIDERED
 (=SWISS DARNING) AFTERWARDS
 x =violet

Viking Alpaca Silk

Lue

1011-10

Viking **ALPACA SILK** (50% alpaca, 50% silk), 50 g ball
Alternative yarns: Viking **BJØRK** (90% cotton, 10% merino wool), 50 g ball

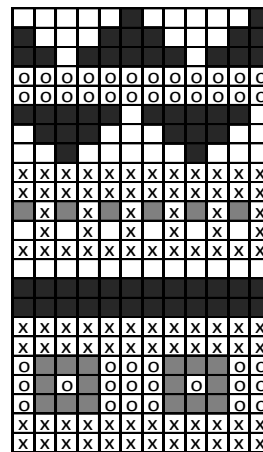
Size	2/4	6/10	12/14	cm
Circumference	43	48	52	cm
	16.9	18.9	20.5	in
Materials				
Violet, 468	1	1	1	ball
Red, 450	1	1	1	ball
Mustard, 445	1	1	1	ball
Grey, 431	1	1	1	ball
Light Pink, 465	1	1	1	ball

Circular needle and double pointed needles size 3 mm – US 2 or 3 – UK/Canadian 11

Gauge: 25 sts = approx. 10 cm/4 in over St st using needles size 3 mm. Check your tension to ensure success.

Using needles size 3 mm and violet yarn, cast on 108-116-120 sts. Work 3 cm/1.2 in, in St st. K 1 rnd (= WS) = folding edge. Cont working in rnds and in patt as charted. Cont working in St st and light pink until work measures approx. 13-15-16 cm/5.1-5.9-6.3 in, measured from folding edge. Next rnd: Adjust evenly across the rnd the number of sts to be 108-111-117 sts.

Border round the hat: Using needles size 3 mm and violet yarn, cast on 180-185-195 sts. K 1 row. Change to red yarn, K 1 row. Next row: *K3, K2tog*, rep *-* across the row. Work 4 rows in Garter st. Next row: *K2, K2tog*, rep *-* across the row = 108-111-117 sts rem. K 2 rows. Break yarn. Knit border and hat sts tog with pink yarn, adjusting the number of sts evenly across the rnd to be 100-110-110 sts. Change to red clr, and work 2 more rnds. Cont working in pink yarn and dec for crown every 2nd rnd: *K16-18-18, K2togtbl, K2tog*, rep *-* across the rnd. Rep dec every 2nd rnd with 2 sts less between dec until 20-20-20 sts rem. Next rnd: K all sts tog in pairs = 10-10-10 sts rem. Break yarn and thread through rem sts. Pull tightly, weave all ends on WS. Fold lower edge double and sew on WS.



⊗ = dark violet
 ○ = mustard
 ◻ = red
 ◼ = green

repeat ↑ Beg here

Viking Alpaca Silk

Hat

1011-11

Viking **ALPACA SILK** (50% alpaca, 50% silk), 50 g ball
Alternative yarn: Viking **BJØRK** (90% cotton, 10% merino wool), 50 g ball

Size	2/4	6/10	12/14	yrs
Circumference	43	48	52	cm
	16.9	18.9	20.5	in

Materials

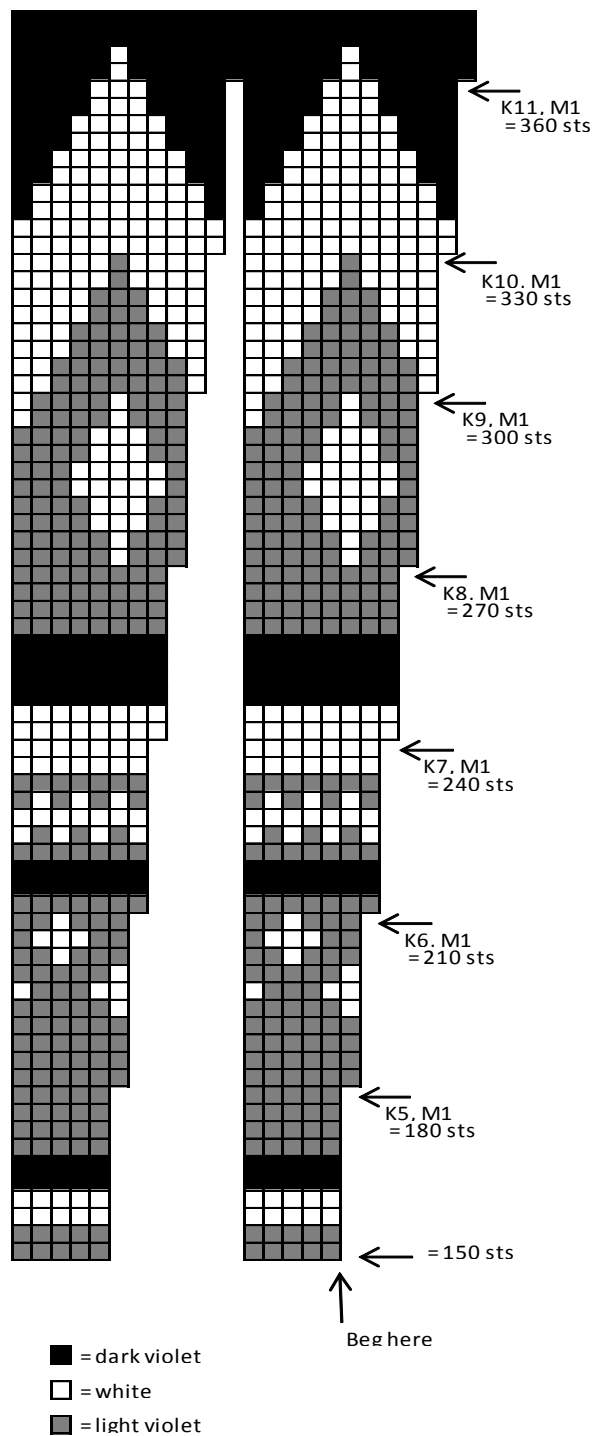
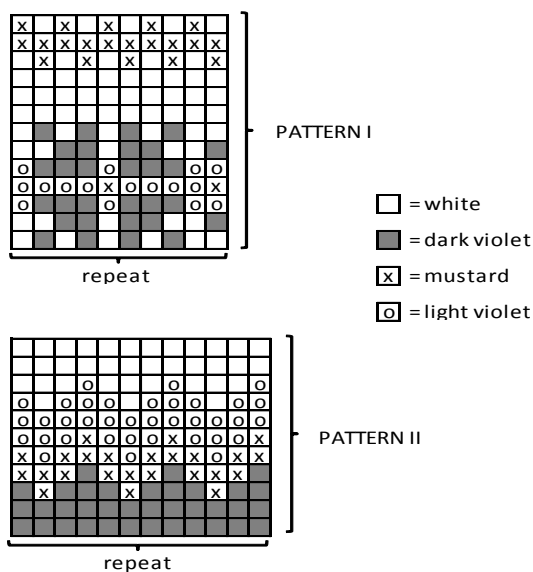
Violet, 468	1	1	2	balls
White, 400	1	1	1	ball
Light Violet, 467	1	1	1	ball
Mustard, 445	1	1	1	ball

Circular needle and double pointed needles size 3 mm – US 2 or 3 – UK/Canadian 11

Gauge: 25 sts = approx. 10 cm/4 in over St st using needles size 3 mm. Check your gauge to ensure success.

Using needles size 3 mm and violet yarn, cast on 108-112-120 sts. Work in rnds approx. 3 cm/1.2 in, in St st. Next rnd: *K2tog, 1 yo*, rep *-* (= folding edge). Cont working in patt I as charted. Next rnd: Adjust the number of sts evenly across the rnd to be 110-110-120 sts. Cont working in rnds in patt II as charted. Cont working in St st and white yarn until work measures approx. 17-19-21 cm/6.7-7.5-8.3 in. Next rnd: *K3, K2tog*, rep *-* across the rnd. Work 4 rnds without dec. Rep dec 1 more time = 66-66-72 sts. Divide sts into three, 22-22-24 sts for each part. Work each part separately. Using 4 dpn, dec as foll: First st of the rnd: K2tog; last st of the rnd: K2togtbl. Rep dec every 4th rnd altog. 5 times. Cont working over rem sts. When work measures 4 cm/1.6 in, change to light violet yarn. Work 3 cm/1.2 in, in St st. Change to violet yarn, and work 3 cm/1.2 in, in St st. Change to mustard clr, and work 2 cm/0.8 in, in St st. K all sts tog in pairs. Break yarn, and thread through rem sts. Pull tightly, and weave ends on WS. Work same for the rem sts. Fold lower edge and sew on WS. Weave in all ends on WS.

After finishing the patt, cont working in K2,P2 rib. When rib measures approx. 4 cm/1.6 in, bind off in rib. Weave all ends on WS.



Viking Alpaca Silk

Cowl

1011-12

Viking ALPACA SILK (50% alpaca, 50% silk), 50 g ball

Alternative yarn: Viking BJØRK (90% cotton, 10% merino wool), 50 g ball

Size: Woman

Materials

Dark Violet, 468 3 balls
 Light Violet, 467 2 balls
 Off-White, 402 2 balls

Circular needle size 3 mm – US 2 or 3 – UK/Canadian 11

Gauge: 25 sts = approx. 10 cm/4 in over St st using needles size 3 mm. Check your tension to ensure success.

COWL (Beg from neck edge)

Using needles size 3 mm and dark violet yarn, cast on 120 sts. Work in rnds in K2,P2 rib. When work measures approx. 20 cm/7.9 in, K 1 rnd, adjusting the number of sts evenly across the rnd to be 150 sts. Cont working in rnds in patt as charted.

Viking Alpaca Silk

Scarf and hat

1011-13

Viking ALPACA SILK (50% alpaca, 50% silk), 50 g ball
Alternative yarn: Viking BJØRK (90% cotton, 10% merino wool), 50 g ball

Size:	Woman
Circumference:	50 cm 19.7 in
Length, scarf:	200 cm 78.8 in
Materials	
Scarf	
Mustard, 445	4 balls
Hat	
Mustard, 445	2 balls

Pair of knitting needles, circular needle and double pointed needles size 3 mm – US 2 or 3 – UK/Canadian 11

Gauge: 25 sts = approx. 10 cm/4 in over St st using needles size 3 mm. Check your gauge to ensure success.

Pattern (divisible with 6 + 1 sts, when worked back and forth, when in rnds divisible with 6 sts)

1st and 3rd row: K2, *P3, K3*, rep *-* across the row, end with P3, K2

2nd row: P2, *K3, P3 *, rep *-*, end with K3 and P2.

4th row: K2, * 1 yo, sl1, K2tog, pssso, 1 yo, K3*, rep *-* and end with K2.

5th and 7th row: Rep 2nd row

6th row: K2, *P3, K3*, rep *-* and end with P3 and K2.

8th row: K2tog, * 1 yo, K3, 1 yo, sl1, K2tog, pssso*, rep *-*, and end with 1 yo, K3, 1 yo, sl2 on RH needle and K them tog.

Rep 1st-8th row.

SCARF

Using needles size 3 mm, cast on 37 sts. Work in patt. When work measures approx. 200 cm/78.8 in, bind off. Using a crochet hook, tie approx. 15 cm/5.9 in fringes to each edge.

HAT

Using needles size 3 mm, cast on 126 sts. Work back and forth 5 cm/2 in, in Garter st. Slip sts on a circular needle. K 1 rnd, adjusting the number of sts evenly across the rnd to be 150 sts. Cont working in rnds in patt. When work measures approx. 23 cm/9.1 in, measured from cast-on edge, cont working in St st. Beg crown dec: *K4, K2tog*, rep *-* across the rnd. Work 2 rnds without dec. Rep dec with 1 st less between dec 50 sts rem on a rnd. Next rnd: K all sts tog in pairs (= 25 sts rem). Work 2 rnds. Rep dec until 13 sts rem on a rnd. Break yarn, and thread through rem sts. Pull tightly, and weave all ends on WS.

Viking Alpaca Silk

Sweater

1011-14

Viking ALPACA SILK (50% alpaca, 50% silk), 50 g ball
Alternative yarn: Viking BJØRK (90% cotton, 10% merino wool), 50 g ball

Size	S	M	L	
Bust	85	90	95	cm
	33.5	35.4	37.4	in
Length	58	60	62	cm
	22.8	23.6	24.4	in
Sleeve length	50	52	54	cm
	19.7	20.5	21.3	in
Materials				
Brown, 418	10	11	12	balls

Double pointed needles and circular needle size 2½ and 3 mm – US 1 or 2 and 2 or 3 – UK/Canadian 13 or 12 and 11

Gauge: 25 sts = approx. 10 cm/4 in over St st using needles size 3 mm. Check your gauge to ensure success.

Seed st:

1st row: *K1, P1*

2nd row: K all p-sts, P all k-sts.

SWEATER

Using needles size 3 mm, cast on 248-260-276 sts. Work 8 rnds in Seed st. Place markers both sides, 124-130-138 sts for both back and front. Beg from side, working in patt: K14-14-16, patt as charted over next 10 sts, P76-82-86, patt as charted over next 10 sts, K14-14-16 (= front). Work in St st over back. Cont working in rnds, dec 1 st both sides of the markers every 6th rnd until 200-212-224 sts rem. When work measures approx. 21-22-23 cm/8.3-8.7-9.1 in. Cont working without dec at sides, but M1 st before patt and K2tog st after patt (work in rev on the other side). Rep inc/dec every 2nd rnd until 4 p-sts rem mid front between patt. Work measures now approx. 27-28-29 cm/10.6-11-11.4 in. Inc 1 st at each edge (= both sides of the markers) approx. every 10th rnd until you have 212-224-236 sts on a rnd. When work measures approx. 39-40-41 cm/15.4-15.7-16.1 in, bind off for armhole 16 sts both sides (8 sts each side of the markers). Finish back and front separately.

Back

Continue working back and forth in St st. Bind off at each edge every 2nd row 1x3, 1x2 and 1x1 sts. When work measures approx. 56-58-60 cm/22-22.8-23.6 in, bind off mid 40-42-44 sts. Finish each side separately. Bind off at neck edge every 2nd row 1x2, and 1x1 sts. When work measures 58-60-62 cm/22.8-23.6-24.4 in, and armhole measures approx. 19-20-21 cm/7.5-7.9-8.3 in, bind off. Work same for the other side, rev all shaping.

Front

Cont working back and forth in patt, bind off for armhole same as for back. When work measures approx. 51-53-54 cm/20.1-20.9-21.3 in, bind off for neck edge mid 34-36-38 sts. Finish each side separately. Bind off at neck edge every 2nd row 1x3, 1x2, and 1x1 sts. When work measures the same as back, bind off. Work same for the other side, rev all shaping.

Sleeves

Using needles size 3 mm, cast on 58-62-64 sts. Work 8 rnds in Seed st. Cont working in rnds in St st. Place marker mid under arm. Inc 1 st both sides of the marker approx. every 2½ cm/1 in (same for all sizes) until you have 94-100-106 sts on a rnd. When work measures approx. 50-52-54 cm/19.7-20.5-21.3 in

(or desired length), bind off 16 sts mid under arm (8 sts both sides of the marker). Cont working back and forth. Bind off at each edge every 2nd row 1x3, 1x2, and 1x1 sts. Bind off rem sts. Work same for the other sleeve.

Finishing: Sew shoulder seams.

Neck border: Beg from front neck edge's 34-36-38 bound-off sts (neck border overlaps mid front). Pick or knit up approx. 170-178-182 sts along neck edge (pick up sts along front neck edge, behind the first picked 34-36-38 sts). Work back and forth P2,K2 rib, ending with P2, dec 1 st at each edge every 4th row (dec inside 2 first and last sts) until neck edge measures approx. 7-8-8 cm/2.8-3.1-3.1 in. Bind off in rib.

Crochet 1 row in sc along neck border edge (beg from front edge).

2nd row: Work 1 row in crab st.

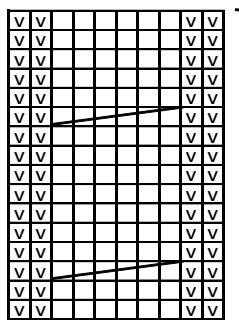
Crochet edge round hem and sleeves: Using crochet hook size 3 mm, work 1 rnd in sc (number of sts must be divisible with 6), end rnd with 1 sl st to 1st sc beg of rnd. Take care that crochet edge doesn't turn out too tight.

2nd rnd: Ch3, *ch1, skip 1 st, 1 dc to next st*, rep *-* across the rnd, end with 1 sl st to 3rd ch beg of rnd.

3rd rnd: Ch3 *ch3, 1 dc to next st*, rep *-* across the rnd, end with 1 sl st to 3rd ch beg of rnd.

Sew on sleeves. Weave in all ends on WS.

Cable pattern for front



repeat

□ = K on RS, P on WS

∇ = P on RS, K on WS

▬ = Sl3 on cn, hold to front, K3, K sts from cn

Viking Alpaca Silk 1011-15

Hat, scarf and fisherman's gloves

Viking **ALPACA SILK** (50% alpaca, 50% silk), 50 g ball

Viking **BJØRK** (90% cotton, 10% merino wool), 50 g ball

Size: Woman

Circumference: 50 cm

19.7 in

Length, scarf: 100 cm

39.4 in

Materials

HAT AND FISHERMAN'S GLOVES

Grey, 415 3 balls

Mustard, 445 1 ball

Blue, 424 1 ball

Light Grey, 413 1 ball

Red, 450 1 ball

Light Violet, 467 1 ball

SCARF

Mustard, 445 1 ball

Double pointed needles and circular needle 2½ and 3 mm – US
1 or 2 and 2 or 3 – UK/Canadian 13 or 12 and 11

Pair of knitting needles for scarf size 4 mm – US –

UK/Canadian

Gauge: 25 sts = approx. 10 cm/4 in over St st using needles size 3 mm. Check your gauge to ensure success.

HAT

Using circular needle size 2½ mm and blue yarn, cast on 124 sts. Work 1 rnd in K2,P2 rib. Change to grey yarn, and cont working in rib, until work measures approx. 4 cm/1.6 in.

Change to needles size 3 mm. K 1 rnd, adjusting the number of sts evenly across the rnd to be 144 sts. Cont working in patt as foll: 2 rnds in St st and grey, patt I as charted, 6 rnds in St st and grey, patt III as charted. Cont working in St st in grey yarn, until work measures approx. 18 cm/7.1 in, measured from cast-on edge. Beg crown dec: *K10, K2tog*, rep *-* across the rnd. K 1 rnd without dec. Cont dec every 2nd rnd with 1 st less between each dec until 24 sts rem. Next rnd: K all sts tog in pairs = 12 m rem. Break yarn, and thread through rem sts. Pull tightly and weave in ends on WS.

SCARF

Using needles size 4 mm, cast on 31 sts. K 1 row. Cont working back and forth in patt as charted. When work measures approx. 75 cm/29.5 in (or when you have used 1 all). Bind off. Sew short edges tog to form a ring.

FISHERMAN'S GLOVES (size: 12/14 yrs and Woman)

Using needles size 3 mm and blue yarn, cast on 48-60 sts. Work 1 rnd in K2,P2 rib. Change to grey yarn, and cont working in rib until work measures approx. 8 cm/3.1 in. K 1 rnd. Work 2 rnds in St st, and patt III as charted. Place markers each side, 24-30 sts for both sides. After patt III is ready, work 4 rnds in grey yarn.

Thumb: Note! Check that changing of clr will take place on the inner seam. Beg from side marker, K2, slip next 8 sts on holder, cast on 4 sts. Cont working in rnds. Work 2 rnds in St st and grey yarn over all sts (= 44-56 sts). Work in patt I as charted + 2 rnds in St st in grey. Work for the fingers:

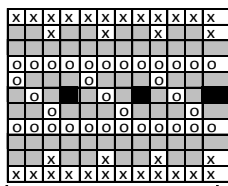
Index finger: Slip 6-7 sts from upper hand, and 6-7 sts from the palm of the hand on dpn size 3 mm, and cast on 2 sts

between index finger and middle finger = 14-16 sts. Work 6-8 rnds in St st. Bind off.

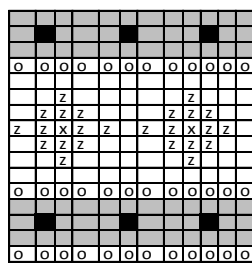
Middle finger: Work same as for index finger, but pick up 2 sts from index finger and cast on 2 sts between middle finger and ring finger = 16-18 sts.

Ring finger: Slip 5-7 sts from upper hand, and 5-7 sts from the palm of the hand on dpn 3 mm. Work same as for middle finger = 14-18 sts.

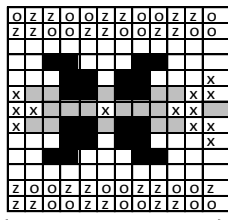
Little finger: Slip rem 10-14 sts on dpn size 3 mm. Pick up 2 sts from ring finger. Work 6 rnds in St st. Bind off. **Thumb:** Slip 8 sts on dpn size 3 mm, and pick up 6 sts from the cast-on sts + 2 sts from each side = 18 sts. Work 8 rnds in St st. Bind off.



PATTERN I
repeat



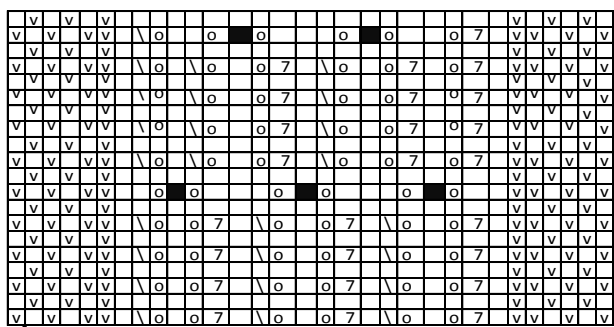
PATTERN II
repeat



PATTERN III
repeat

- = grey
- = blue
- = light violet
- = mustard
- = red
- = light grey

PATT FOR SCARF



end here

Beg here

- = K on RS, P on WS
- = P on RS, K on WS
- = K2tog
- = yo
- = K2togtbl
- = S11, K2tog, pss0